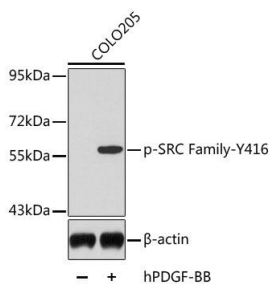
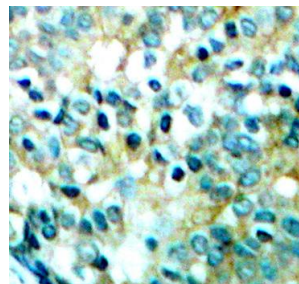


Cat. No:	ABP-0452
Conjugate:	Unconjugated
Size:	100 ug
Clone:	Poly
Concentration:	1mg/ml
Host:	Rb
Isotype:	IgG
Immunogen:	A phospho specific peptide corresponding to residues surrounding Y416 of human SRC Family
Reactivity:	Hu, Ms, Rt
Applications:	Western Blot: 1:500 - 1:1000 Immunohistochemistry: 1:50 - 1:100
Molecular Weight:	60kDa
Purification:	Affinity purification
Synonyms:	SRC; ASV; SRC1; THC6; c-SRC; p60-Src; proto-oncogene tyrosine-protein kinase Src
Background:	This gene is highly similar to the v-src gene of Rous sarcoma virus. This protooncogene may play a role in the regulation of embryonic development and cell growth. The protein encoded by this gene is a tyrosine-protein kinase whose activity can be inhibited by phosphorylation by c-SRC kinase. Mutations in this gene could be involved in the malignant progression of colon cancer. Two transcript variants encoding the same protein have been found for this gene.
Form:	liquid
Buffer:	PBS with 0.02% sodium azide, 50% glycerol, pH7.3.
Storage:	Store at -20°C. Avoid freeze / thaw cycles.



Western blot analysis of extracts from COLO205 cells, using Phospho-SRC Family-Y416 antibody.



Immunohistochemistry of paraffinembedded human breast carcinoma tissue, using Phospho-SRC-Y416 antibody.

**For Research use only
IMMUNOLOGICAL SCIENCES**