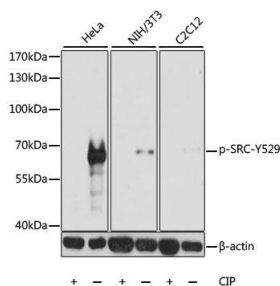
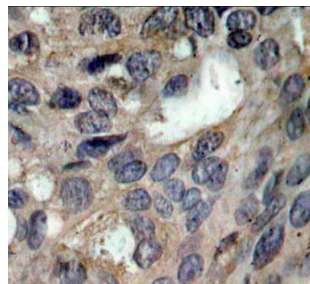


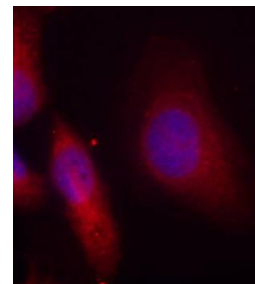
Cat. No:	ABP-0185
Conjugate:	Unconjugated
Size:	100 ug
Clone:	POLY
Concentration:	1mg/ml
Host:	Rb
Isotype:	IgG
Immunogen:	A phospho specific peptide corresponding to residues surrounding Y529 of human SRC
Reactivity:	Hu, Ms
Applications:	Western Blot: 1:1000 Immunohistochemistry (paraffin-embedded tissues): 1:50 - 1:100 Immunofluorescence: 1:100 - 1:200
Molecular Weight:	60kDa
Purification:	Affinity purification
Synonyms:	ASV;c-SRC;p60-Src;SRC1;ASV;c-SRC;p60-Src;SRC1; THC6
Background:	This gene is highly similar to the v-src gene of Rous sarcoma virus. This protooncogene may play a role in the regulation of embryonic development and cell growth. The protein encoded by this gene is a tyrosine-protein kinase whose activity can be inhibited by phosphorylation by c-SRC kinase. Mutations in this gene could be involved in the malignant progression of colon cancer. Two transcript variants encoding the same protein have been found for this gene.
Form:	liquid
Buffer:	PBS with 0.02% sodium azide, 50% glycerol, pH7.3.
Storage:	Store at -20°C. Avoid freeze / thaw cycles.



Western blot - Phospho-SRC-Y529 Antibody.



Immunohistochemistry - Phospho- SRC-Y529 antibody.



Immunofluorescence staining - Phospho-SRC-Y529 antibody

**For Research use only
IMMUNOLOGICAL SCIENCES**