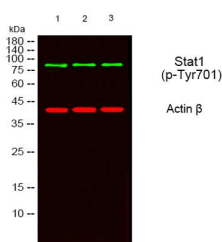
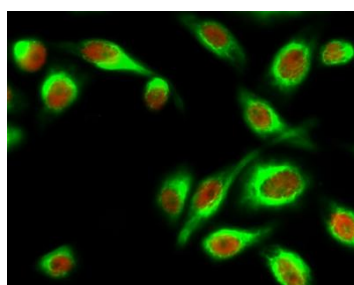


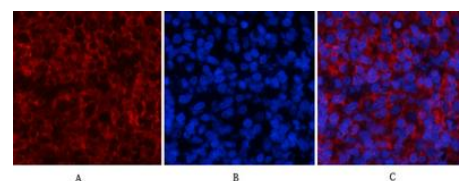
Cat. No:	ABP-0135
Conjugate:	Unconjugated
Size:	100 ug
Clone:	Poly
Concentration:	1mg/ml
Host:	Rabbit
Isotype:	IgG
Immunogen:	The antiserum was produced against synthesized peptide derived from human STAT1 around the phosphorylation site of Tyr701. AA range:668-717.
Reactivity:	Human;Mouse;Rat;Monkey
Applications:	Western Blot: 1/500 - 1/2000 Immunofluorescence: 1:50-200 Immunohistochemistry: 1/100 - 1/300 Immunoprecipitation: 2-5 ug/mg lysate ELISA:1/10000
Molecular Weight:	87 kDa
Purification:	The antibody was affinity-purified from rabbit antiserum by affinity-chromatography using epitope-specific immunogen.
Synonyms:	STAT1; Signal transducer and activator of transcription 1-alpha/beta; Transcription factor ISGF-3 components p91/p84
Background:	The protein encoded by this gene is a member of the STAT protein family. In response to cytokines and growth factors, STAT family members are phosphorylated by the receptor associated kinases, and then form homo- or heterodimers that translocate to the cell nucleus where they act as transcription activators. This protein can be activated by various ligands including interferon-alpha, interferon-gamma, EGF, PDGF and IL6. This protein mediates the expression of a variety of genes, which is thought to be important for cell viability in response to different cell stimuli and pathogens. Two alternatively spliced transcript variants encoding distinct isoforms have been described.
Form:	liquid
Buffer:	Liquid in PBS containing 50% glycerol, 0.5% BSA and 0.02% sodium azide
Storage:	Store at -20°C. Avoid repeated freeze-thaw cycles.



Western blot analysis of lysates from 1) MOUSE-BRAIN, 2) SY-SY5X ,3) COS7



Immunofluorescence analysis of HeLa cell. 1,Stat1 (phospho Tyr701) Polyclonal

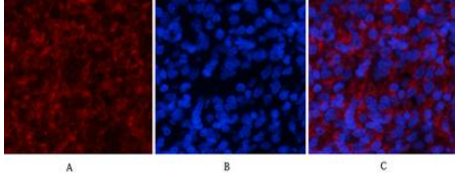


Immunofluorescence analysis of rat-spleen tissue. 1,Stat1 (phospho Tyr701) Polyclonal Antibody(red) was diluted at 1:200(4°C,overnight). 2, Cy3 labeled Secondary antibody was diluted at 1:300(room temperature,

cells, Green primary antibody was diluted at 1:1000, 4° over night, secondary antibody(cat:RS23920) was diluted at 1:10000, 37° 1hour.
Red Actin β Monoclonal Antibody(5B7) antibody was diluted at 1:5000 as loading control, 4° over night, secondary antibody was diluted at 1:10000, 37° 1hour.

Antibody(red) was diluted at 1:200(4° overnight). HER2 Monoclonal Antibody(11H9)(green) was diluted at 1:200(4° overnight).
2, Goat Anti Rabbit Alexa Fluor 594

50min).
3, Picture B: DAPI(blue) 10min.



Immunofluorescence analysis of rat-spleen tissue.

- 1, Stat1 (phospho Tyr701) Polyclonal Antibody(red) was diluted at 1:200(4°C, overnight).
- 2, Cy3 labeled Secondary antibody was diluted at 1:300(room temperature, 50min).
- 3, Picture B: DAPI(blue) 10min.
Picture A: Target.
Picture B: DAPI.
Picture C: merge of A+B