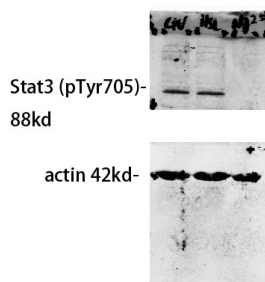
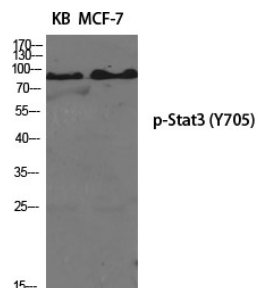


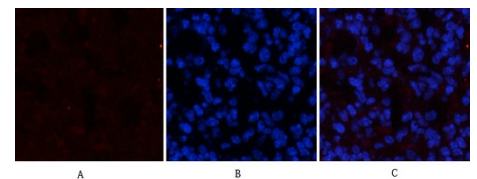
|                       |  |
|-----------------------|--|
| <b>Cat. No:</b>       | ABP-4001   |
| <b>Conjugate:</b>     | Unconjugated   |
| <b>Size:</b>          | 100 ug   |
| <b>Clone:</b>         | Poly   |
| <b>Concentration:</b> | 1mg/ml   |
| <b>Host:</b>          | Rb   |
| <b>Isotype:</b>       | IgG  |
| <b>Immunogen:</b>     | Synthesized peptide derived from human Stat3 around the phosphorylation site of Tyr705.  |
| <b>Reactivity:</b>    | Hu, Ms, Rt   |
| <b>Applications:</b>  | Western Blot: 1:1000 Immunohistochemistry (paraffin-embedded tissues): 1:200<br>Immunofluorescence: 1:100 Immunoprecipitation: 1-2,5 ug/mg lysate ELISA: 1:5000  |
| <b>Purification:</b>  | The antibody was affinity-purified from rabbit antiserum by affinity-chromatography using epitope-specific immunogen.  |
| <b>Background:</b>    | The protein encoded by this gene is a member of the STAT protein family. In response to cytokines and growth factors, STAT family members are phosphorylated by the receptor associated kinases, and then form homo- or heterodimers that translocate to the cell nucleus where they act as transcription activators. Phospho-Stat3 (Tyr705) Polyclonal Antibody detects endogenous levels of Stat3 protein only when phosphorylated at Tyr705 |
| <b>Form:</b>          | liquid   |
| <b>Buffer:</b>        | Liquid in PBS containing 50% glycerol, 0.5% BSA and 0.02% sodium azide.  |
| <b>Storage:</b>       | Store at -20°C. Do not aliquot the antibody.   |



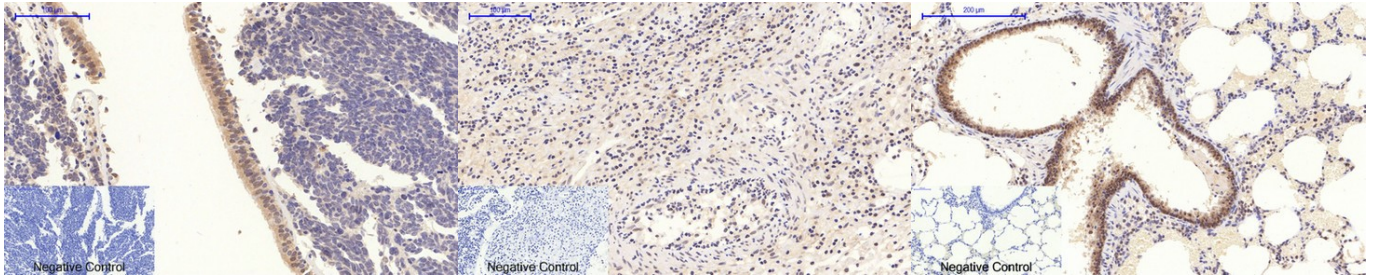
Western Blot analysis of our customer's samples using primary antibody diluted at 1:500, The picture was kindly provided by our customer.



Western Blot analysis of various cells using Phospho-Stat3 (Tyr705) Polyclonal Antibody diluted at 1:1000



Immunofluorescence analysis of mouse-spleen tissue. A) Stat3 (phospho Tyr705) Polyclonal Antibody(red) was diluted at 1:100(4°C,overnight). B) Cy3 labeled Secondary antibody was diluted at 1:300(room temperature, 50min).C) Picture B: DAPI(blue) 10min. Picture A:Target. Picture B: DAPI. Picture C: merge of A+B



IHC(P) on Human-lung-cancer tissue.  
Stat3 (phospho Tyr705) 1:200  
(4°C,overnight). Sodium citrate pH 6.0  
was used for antibody retrieval  
(>98°C,20min). Secondary antibody at  
1:200(RT 30min). Negative control was  
used by secondary antibody only.

IHC(P) Human-Appendix tissue. Stat3  
(phospho Tyr705) 1:200 (4°C,overnight).  
Sodium citrate pH 6.0 was used for  
antibody retrieval(>98°C,20min).  
Secondary antibody was diluted at  
1:200(RT 30min). Negative control was  
used by secondary antibody only.

IHC(P) Rat-lung tissue. Stat3 (phospho  
Tyr705) 1:200(4°C,overnight). Sodium  
citrate pH 6.0 was used for antibody  
retrieval(>98°C,20min). Secondary  
antibody was diluted at 1:200 (RT,  
30min). Negative control was used by  
secondary antibody only.

**For Research use only  
IMMUNOLOGICAL SCIENCES**