

Cat. No: ABP-0138
Conjugate: Unconjugated
Size: 100 ug
Clone: Poly
Concentration: 1mg/ml
Host: Rb
Isotype: IgG

Immunogen: A phospho specific peptide corresponding to residues surrounding Tyr694 of human STAT5A

Reactivity: Hu, Ms, Rt

Applications: Western Blot: 1:1000

Molecular Weight: 105kDa

Purification: Affinity purification

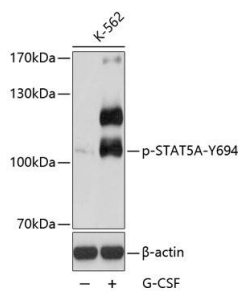
Background:

The protein encoded by this gene is a member of the STAT family of transcription factors. In response to cytokines and growth factors, STAT family members are phosphorylated by the receptor associated kinases, and then form homo- or heterodimers that translocate to the cell nucleus where they act as transcription activators. This protein is activated by, and mediates the responses of many cell ligands, such as IL2, IL3, IL7 GM-CSF, erythropoietin, thrombopoietin, and different growth hormones. Activation of this protein in myeloma and lymphoma associated with a TEL/JAK2 gene fusion is independent of cell stimulus and has been shown to be essential for tumorigenesis. The mouse counterpart of this gene is found to induce the expression of BCL2L1/BCL-X(L), which suggests the antiapoptotic function of this gene in cells. Alternatively spliced transcript variants have been found for this gene.

Form: liquid

Buffer: PBS with 0.02% sodium azide, 50% glycerol, pH7.3.

Storage: Store at -20°C. Avoid freeze / thaw cycles.



Western blot analysis of extracts of K562 cells, using Phospho-STAT5A-Y694 antibody at 1:2000 dilution. K562 cells were treated by G-CSF (25ng/ml) for 30 minutes after serum-starvation overnight. Secondary antibody: HRP Goat Anti-Rabbit IgG (H+L) at 1:10000 dilution. Lysates/proteins: 25ug per

lane.Blocking buffer: 3% BSA. Detection:
ECL Exposure time: 90s

**For Research use only
IMMUNOLOGICAL SCIENCES**