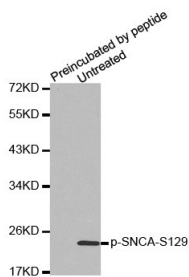


Cat. No:	ABP-0450
Conjugate:	Unconjugated
Size:	100 ug
Clone:	Poly
Concentration:	1mg/ml
Host:	Rb
Isotype:	IgG
Immunogen:	Western blot analysis of extracts from Hela cells, using Phospho-NFKB-p65 (Thr435) antibody.
Reactivity:	Hu, Ms, Rt
Applications:	Western Blot: 1:1000
Molecular Weight:	18kDa
Purification:	Affinity purification
Background:	Alpha-synuclein is a member of the synuclein family, which also includes beta- and gamma-synuclein. Synucleins are abundantly expressed in the brain and alpha- and beta-synuclein inhibit phospholipase D2 selectively. SNCA may serve to integrate presynaptic signaling and membrane trafficking. Defects in SNCA have been implicated in the pathogenesis of Parkinson disease. SNCA peptides are a major component of amyloid plaques in the brains of patients with Alzheimer's disease. Four alternatively spliced transcripts encoding two different isoforms have been identified for this gene.
Form:	liquid
Buffer:	PBS with 0.02% sodium azide, 50% glycerol, pH7.3.
Storage:	Store at -20°C. Avoid freeze / thaw cycles.



Western blot analysis of extracts of mouse brain tissue using Phospho-Synuclein Alpha Ser-129 antibody.

**For Research use only
IMMUNOLOGICAL SCIENCES**