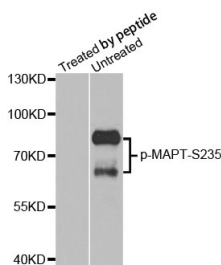


<b>Cat. No:</b>	ABP-0167
<b>Conjugate:</b>	Unconjugated
<b>Size:</b>	100 ug
<b>Clone:</b>	Poly
<b>Concentration:</b>	1mg/ml
<b>Host:</b>	Rb
<b>Isotype:</b>	IgG
<b>Immunogen:</b>	A phospho specific peptide corresponding to residues surrounding S235 of human MAPT
<b>Reactivity:</b>	Hu, Ms, Rt
<b>Applications:</b>	WB: 1:1000
<b>Molecular Weight:</b>	79kDa
<b>Purification:</b>	Affinity purification
<b>Synonyms:</b>	TAU;MSTD;PPND;DDPAC;MAPTL;MTBT1;MTBT2;FTDP-17
<b>Background:</b>	This gene encodes the microtubule-associated protein tau (MAPT) whose transcript undergoes complex, regulated alternative splicing, giving rise to several mRNA species. MAPT transcripts are differentially expressed in the nervous system, depending on stage of neuronal maturation and neuron type. MAPT gene mutations have been associated with several neurodegenerative disorders such as Alzheimer's disease, Pick's disease, frontotemporal dementia, cortico-basal degeneration and progressive supranuclear palsy.
<b>Form:</b>	liquid
<b>Buffer:</b>	PBS with 0.02% sodium azide,50% glycerol,pH7.3.
<b>Storage:</b>	Store at -20°C. Avoid freeze / thaw cycles.



Western blot analysis of extracts from mouse brain tissue

**For Research use only  
IMMUNOLOGICAL SCIENCES**