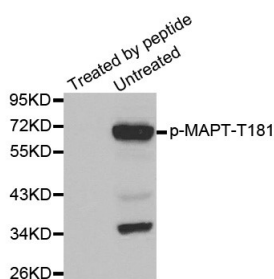
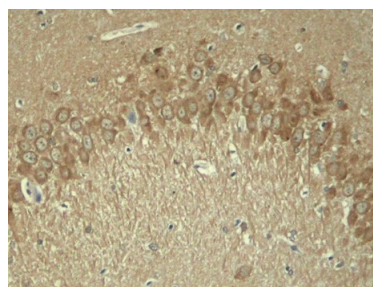


Cat. No:	APB-0399
Conjugate:	Unconjugated
Size:	100 ug
Clone:	Poly
Concentration:	1mg/ml
Host:	Rb
Isotype:	IgG
Immunogen:	A phospho specific peptide corresponding to residues surrounding T181 of human
Reactivity:	Hu
Applications:	Western Blot: 1:1000 Immunohistochemistry (paraffin embedded tissues): 1:50-1:100
Purification:	Affinity purification
Background:	<p>This gene encodes the microtubule-associated protein tau (MAPT) whose transcript undergoes complex, regulated alternative splicing, giving rise to several mRNA species. MAPT transcripts are differentially expressed in the nervous system, depending on stage of neuronal maturation and neuron type. Tau gene mutations have been associated with several neurodegenerative disorders such as Alzheimer's disease, Pick's disease, frontotemporal dementia, cortico-basal degeneration and progressive supranuclear palsy.</p>
Form:	liquid
Buffer:	PBS with 0.02% sodium azide, 50% glycerol, pH7.3.
Storage:	Store at -20°C. Avoid freeze / thaw cycles.



Western blot analysis of extracts from mouse brain tissue using Phospho-Tau-T181 antibody.



Immunohistochemical analysis of paraffin-embedded rat hippocampal region tissue from a model with Alzheimer using Phospho-Tau-T181 antibody.

**For Research use only
IMMUNOLOGICAL SCIENCES**