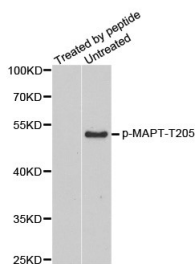
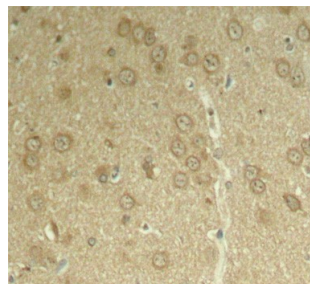


<b>Cat. No:</b>	ABP-0168
<b>Conjugate:</b>	Unconjugated
<b>Size:</b>	100 ug
<b>Clone:</b>	Poly
<b>Concentration:</b>	1mg/ml
<b>Host:</b>	Rb
<b>Isotype:</b>	IgG
<b>Immunogen:</b>	A phospho specific peptide corresponding to residues surrounding T205 of human TAU
<b>Reactivity:</b>	Hu, Ms, Rt
<b>Applications:</b>	Western Blot: 1:1000 Immunohistochemistry (paraffin-embedded tissues): 1:50-1:
<b>Molecular Weight:</b>	79kDa
<b>Purification:</b>	Affinity purification
<b>Background:</b>	This gene encodes the microtubule-associated protein tau (MAPT) whose transcript undergoes complex, regulated alternative splicing, giving rise to several Mrna species. MAPT transcripts are differentially expressed in the nervous system, depending on stage of neuronal maturation and neuron type. MAPT gene mutations have been associated with several neurodegenerative disorders such as Alzheimer's disease, Pick's disease, frontotemporal dementia, cortico-basal degeneration and progressive supranuclear palsy.
<b>Form:</b>	liquid
<b>Buffer:</b>	PBS with 0.02% sodium azide, 50% glycerol, pH7.3.
<b>Storage:</b>	Store at -20°C. Avoid freeze / thaw cycles.



Western blot analysis of extracts from mouse brain tissue, using phospho-TAU-T205 antibody.



Immunohistochemical analysis of paraffin-embedded rat hippocampal region tissue from a model with Alzheimer, using phospho-TAU-T205 antibody.

**For Research use only  
IMMUNOLOGICAL SCIENCES**