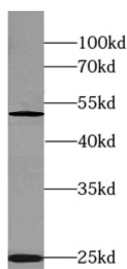


Cat. No:	MAB-94357
Conjugate:	Unconjugated
Size:	100 ug
Clone:	TDP43
Concentration:	1mg/ml
Host:	Ms
Isotype:	IgG1
Immunogen:	TAR DNA binding protein
Reactivity:	Hu, Ms
Applications:	Western Blot: 1:1000-1:2000 Elisa
Molecular Weight:	50 kDa 25 kDa Cleavage form
Purification:	Protein A+G purification
Synonyms:	Phospho TDP43, phospho(403/404)-TDP43, TARDBP, TDP43
Background:	This antibody is a mouse monoclonal antibody recognizing TDP-43 only when phosphorylated at 403/404. This antibody detects phosphorylated forms of TDP-43 as well as the cleavage product of 25kDa and the non cleavage form at ~50kDa.
Form:	liquid
Buffer:	PBS with 0.02% sodium azide, 50% glycerol, pH7.3.
Storage:	Store at -20°C. Avoid freeze / thaw cycles.



K-562 cells were subjected to SDS PAGE followed by western blot with (phospho(403/404)-TDP43 Antibody at dilution of 1:1500

**For Research use only
IMMUNOLOGICAL SCIENCES**