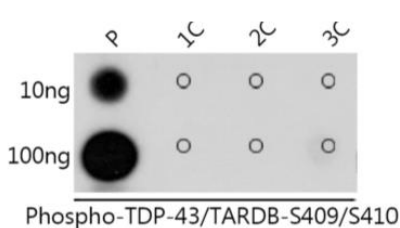
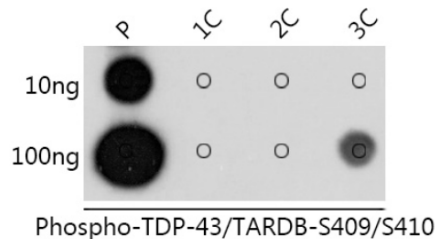


Cat. No:	AB-83806
Conjugate:	Unconjugated
Size:	100 ug
Clone:	POLY
Concentration:	1mg/ml
Host:	Rabbit
Isotype:	IgG
Immunogen:	A synthetic phosphorylated peptide around S409 & S410 of human TDP-43/TARDB (NP_031401.1).
Reactivity:	Human
Applications:	Dot Blot: 1:500 - 1:1000 Western Blot 1:500 - 1:2000
Molecular Weight:	45kDa
Purification:	Affinity purification
Synonyms:	ALS10; TDP-43; Phospho-TDP-43/TARDB-S409/S410
Background:	HIV-1, the causative agent of acquired immunodeficiency syndrome (AIDS), contains an RNA genome that produces a chromosomally integrated DNA during the replicative cycle. Activation of HIV-1 gene expression by the transactivator Tat is dependent on an RNA regulatory element (TAR) located downstream of the transcription initiation site. The protein encoded by this gene is a transcriptional repressor that binds to chromosomally integrated TAR DNA and represses HIV-1 transcription. In addition, this protein regulates alternate splicing of the CFTR gene. A similar pseudogene is present on chromosome 20.
Form:	liquid
Buffer:	Buffer: PBS with 0.05% proclin300, 50% glycerol, pH7.3.
Storage:	Store at -20°C. Avoid freeze / thaw cycles.



Dot-blot analysis of all sorts of peptides using Phospho-TDP-43/TARDB-S409/S410 antibody at 1:1000 dilution. Exposure time: 1s.



Dot-blot analysis of all sorts of peptides using Phospho-TDP-43/TARDB-S409/S410 antibody at 1:1000 dilution. Exposure time: 10s.

**For Research use only
IMMUNOLOGICAL SCIENCES**