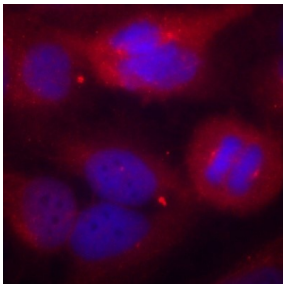


Cat. No:	ABP-0211
Conjugate:	Unconjugated
Size:	100 ug
Clone:	Poly
Concentration:	1mg/ml
Host:	Rb
Isotype:	IgG
Immunogen:	A phospho specific peptide corresponding to residues surrounding Ser40 of human TH
Reactivity:	Hu, Ms, Rt
Applications:	IF 1:100 - 1:200
Purification:	Affinity Purified
Background:	<p>The protein encoded by this gene is involved in the conversion of tyrosine to dopamine. It is the rate-limiting enzyme in the synthesis of catecholamines, hence plays a key role in the physiology of adrenergic neurons. Mutations in this gene have been associated with autosomal recessive Segawa syndrome. Alternatively spliced transcript variants encoding different isoforms have been noted for this gene.</p>
Form:	liquid
Buffer:	PBS with 0.02% sodium azide, 50% glycerol, pH7.4
Storage:	Store at -20°C. Avoid freeze / thaw cycles.



Immunofluorescence staining of methanol-fixed HeLa cells using Phospho-TH-S40 antibody.

**For Research use only
IMMUNOLOGICAL SCIENCES**