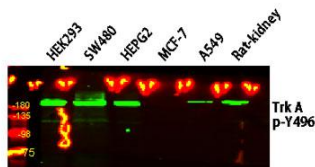


Cat. No:	ABP-11213
Conjugate:	Unconjugated
Size:	100 ug
Clone:	Poly
Concentration:	1mg/ml
Host:	Rabbit
Isotype:	IgG
Immunogen:	Synthesized pospho peptide derived from human Trk A (Phospho-Tyr496)
Reactivity:	Human, Mouse, Rat
Applications:	Western Blot: 1:500 - 1:2000 Immunofluorescence: 1:100 - 1:500 ELISA: 1:5000 - 1:20000
Molecular Weight:	180 kDa
Purification:	Affinity Purified
Synonyms:	NTRK1; MTC; TRK; TRKA

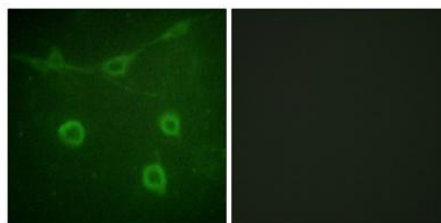
Background: This gene encodes a member of the neurotrophic tyrosine kinase receptor (NTRK) family. This kinase is a membrane-bound receptor that, upon neurotrophin binding, phosphorylates itself and members of the MAPK pathway. The presence of this kinase leads to cell differentiation and may play a role in specifying sensory neuron subtypes.

Mutations in this gene have been associated with congenital insensitivity to pain, anhidrosis, self-mutilating behavior, mental retardation and cancer. Alternate transcriptional splice variants of this gene have been found, but only three have been characterized to date.

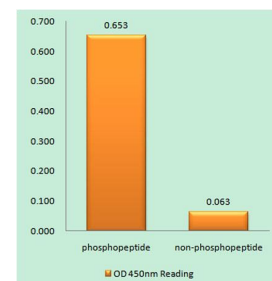
Form:	Liquid
Buffer:	PBS containing 50% glycerol, 0.5% BSA and 0.02% sodium azide
Storage:	Store at -20°C. Avoid repeated freeze-thaw cycles.



Western blot analysis of various lysates. Primary antibody was diluted at 1:1000, 4° over night, secondary antibody was diluted at 1:10000, 37° 1hour.



Immunofluorescence analysis of NIH/3T3 cells, using Phospho-TrkA (Tyr496) Antibody. The picture on the right is blocked with the phospho peptide.



Enzyme-Linked Immunosorbent Assay (Phospho-ELISA) for Immunogen Phosphopeptide (Phospho-left) and Non-Phosphopeptide (Phospho-right), using Phospho-TrkA (Tyr496) Antibody



**Product Data Sheet:
Phospho-TrkA (Tyr496) Rabbit Polyclonal Antibody**

**For Research use only
IMMUNOLOGICAL SCIENCES**