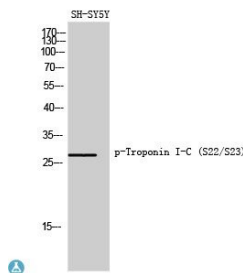


<b>Cat. No:</b>	ABP11161
<b>Conjugate:</b>	Unconjugated
<b>Size:</b>	100 ug
<b>Clone:</b>	Poly
<b>Concentration:</b>	1mg/ml
<b>Host:</b>	Rb
<b>Isotype:</b>	IgG
<b>Immunogen:</b>	Synthesized peptide derived from human Troponin I-C around the phosphorylation site of S22/S23.
<b>Reactivity:</b>	Ms, Rt
<b>Applications:</b>	Western Blot: 1:500-1:2000 Immunohistochemistry: 1:100-1:300 ELISA: 1:20000
<b>Molecular Weight:</b>	28kDa
<b>Purification:</b>	The antibody was affinity-purified from rabbit antiserum by affinity chromatography using epitope-specific immunogen.
<b>Synonyms:</b>	Troponin I, cardiac muscle Cardiac troponin I
<b>Background:</b>	Troponin I is the inhibitory subunit of troponin, the thin filament regulatory complex which confers calcium-sensitivity to striated muscle actomyosin ATPase activity. Phospho-Troponin I-C (S22/S23) polyclonal antibody detects endogenous levels of Troponin I-C protein only when phosphorylated at S22/S23.
<b>Form:</b>	liquid
<b>Buffer:</b>	Liquid in PBS containing 50% glycerol, 0.5% BSA and 0.02% sodium azide.
<b>Storage:</b>	Store at -20°C, and avoid repeat freeze-thaw cycles.



Western Blot (WB) analysis of SH-SY5Y cells using Phospho-Troponin I-C (S22/S23) polyclonal antibody.

**For Research use only  
IMMUNOLOGICAL SCIENCES**