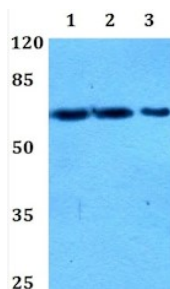


Cat. No:	AB-84441
Conjugate:	Unconjugated
Size:	100 ug
Clone:	POLY
Concentration:	1mg/ml
Host:	Rb
Isotype:	IgG
Immunogen:	Synthesized peptide derived from human protein at AA range: 150-230
Reactivity:	Hu, Ms, Rt
Applications:	WB 1:500-2000 ELISA 1:5000-20000
Molecular Weight:	70kDa
Purification:	Aff. Pur.

Background:	<p>This gene encodes a DNA-dependent adenosine triphosphate (ATP)-metabolizing enzyme that functions as a 5'-to-3' DNA helicase. The encoded protein can resolve G-quadruplex structures and RNA-DNA hybrids at the ends of chromosomes. It also prevents telomere elongation by inhibiting the actions of telomerase. Alternative splicing and the use of alternative start codons results in multiple isoforms that are differentially localized to either the mitochondria or the nucleus.</p>
Form:	Liquid
Buffer:	PBS containing 50% glycerol, 0.5% BSA and 0.02% sodium azide.
Storage:	Store at -20°C. Avoid repeated freeze-thaw cycles.



Western Blot on PIF1 Antibody at Dilution
1:1000

Lane 1 : HeLa whole cell lysate
Lane 2 : Raw264.7 whole cell lysate
Lane 3 : PC12 whole cell lysate

**For Research use only
IMMUNOLOGICAL SCIENCES**