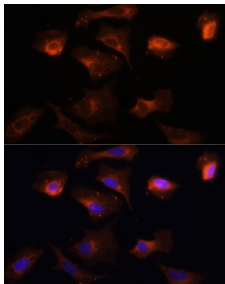
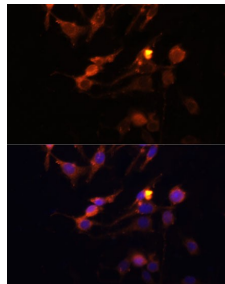


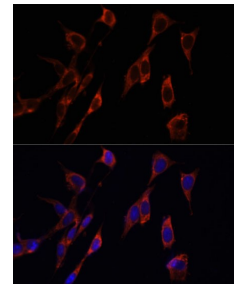
Cat. No:	AB-84045
Conjugate:	Unconjugated
Size:	100 ug
Clone:	POLY
Concentration:	1mg/ml
Host:	Rb
Isotype:	IgG
Immunogen:	Recombinant fusion protein containing a sequence corresponding to amino acids 282-581 of human PINK1
Reactivity:	Hu, Ms, Rt
Applications:	IF 1:50 – 1:200
Molecular Weight:	46KD, 60KD
Purification:	Aff. Pur.
Synonyms:	PINK1; BRPK; PARK6; PTEN induced putative kinase 1
Background:	This gene encodes a serine/threonine protein kinase that localizes to mitochondria. It is thought to protect cells from stress-induced mitochondrial dysfunction. Mutations in this gene cause one form of autosomal recessive early-onset Parkinson disease.
Form:	Liquid
Buffer:	Liquid in PBS containing 0.02% sodium azide, 50% glycerol, Ph7.3.
Storage:	At +4°C for short term. For longer term store at -20°C, avoid repeat freeze-thaw cycles



Immunofluorescence analysis of U-2 OS cells using PINK1 Polyclonal Antibody at dilution of 1:100 (40x lens). Blue: DAPI for nuclear staining.



Immunofluorescence analysis of C6 cells (RAT) using PINK1 Polyclonal Antibody at dilution of 1:100 (40x lens). Blue: DAPI for nuclear staining.



Immunofluorescence analysis of NIH-3T3 mouse embryo fibroblast cell using PINK1 Polyclonal Antibody at dilution of 1:100 (40x lens). Blue: DAPI for nuclear staining.

**For Research use only
IMMUNOLOGICAL SCIENCES**