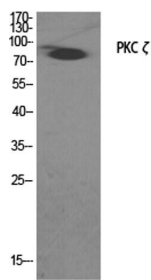
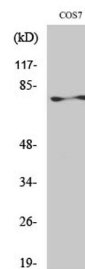


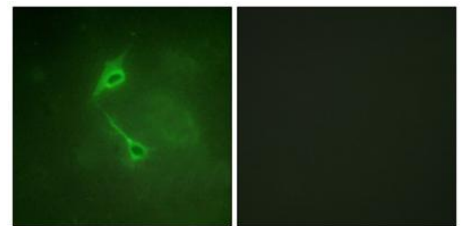
Cat. No:	AB-84799
Conjugate:	Unconjugated
Size:	100 ug
Clone:	POLY
Concentration:	1mg/ml
Host:	Rabbit
Isotype:	IgG
Immunogen:	The antiserum was produced against synthesized peptide derived from human PKC zeta. AA range:526-575
Reactivity:	Human;Mouse;Rat;Monkey
Applications:	Western Blot: 1/500 - 1/2000. Immunohistochemistry: 1/100 - 1/300. Immunofluorescence: 1/200 - 1/1000.
Molecular Weight:	80kD
Purification:	The antibody was affinity-purified from rabbit antiserum by affinity-chromatography using epitope-specific immunogen.
Synonyms:	PRKCZ; PKC2; Protein kinase C zeta type; nPKC-zeta
Background:	Protein kinase C (PKC) zeta is a member of the PKC family of serine/threonine kinases which are involved in a variety of cellular processes such as proliferation, differentiation and secretion. Unlike the classical PKC isoenzymes which are calcium-dependent, PKC zeta exhibits a kinase activity which is independent of calcium and diacylglycerol but not of phosphatidylserine. Furthermore, it is insensitive to typical PKC inhibitors and cannot be activated by phorbol ester. Unlike the classical PKC isoenzymes, it has only a single zinc finger module. These structural and biochemical properties indicate that the zeta subspecies is related to, but distinct from other isoenzymes of PKC. Alternative splicing results in multiple transcript variants encoding different isoforms.
Form:	Liquid
Buffer:	Liquid in PBS containing 50% glycerol, 0.5% BSA and 0.02% sodium azide.
Storage:	Store at -20°C. Avoid repeated freeze-thaw cycles.



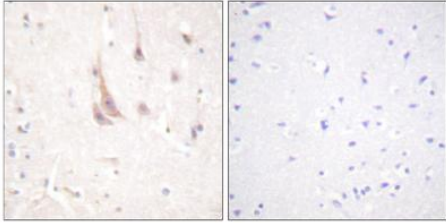
Western Blot analysis of various cells using PKC ζ Polyclonal Antibody diluted at 1:2000



Western Blot analysis of COS7 cells using PKC ζ Polyclonal Antibody diluted at 1:2000



Immunofluorescence analysis of NIH/3T3 cells, using PKC zeta Antibody. The picture on the right is blocked with the synthesized peptide.



Immunohistochemistry analysis of paraffin-embedded human brain tissue, using PKC zeta Antibody. The picture on the right is blocked with the synthesized peptide.

**For Research use only
IMMUNOLOGICAL SCIENCES**