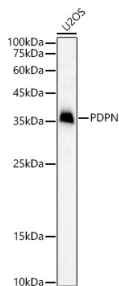
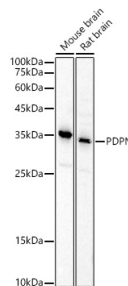


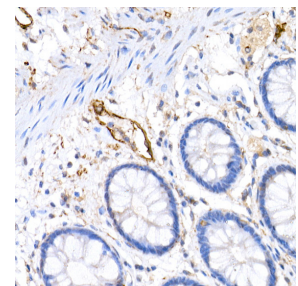
Cat. No:	AB-84747
Conjugate:	Unconjugated
Size:	100 ug
Clone:	POLY
Concentration:	1mg/ml
Host:	Rabbit
Isotype:	IgG
Immunogen:	Recombinant fusion protein containing a sequence corresponding to amino acids 99-199 of human Podoplanin
Reactivity:	Human; Mouse, Rat
Applications:	Western Blot: 1:500 - 1:1000 Immunohistochemistry: 1:50 - 1:200
Molecular Weight:	36kDa
Purification:	Affinity purification
Synonyms:	PDPN; AGGRUS; GP36; GP40; Gp38; HT1A-1; OTS8; PA2.26; T1A; T1A-2; T1A2; T1A; podoplanin
Background:	This gene encodes a type-I integral membrane glycoprotein with diverse distribution in human tissues. The physiological function of this protein may be related to its mucintype character. The homologous protein in other species has been described as a differentiation antigen and influenza-virus receptor. The specific function of this protein has not been determined but it has been proposed as a marker of lung injury. Alternatively spliced transcript
Form:	Liquid
Buffer:	PBS with 0.05% proclin300,50% glycerol,pH7.3.
Storage:	Store at -20°C. Avoid freeze / thaw cycles.



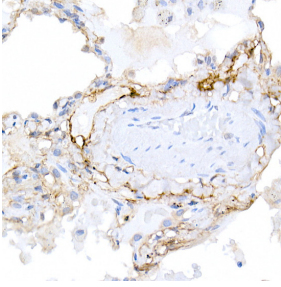
Western blot analysis of U2OS, using PDPN antibody at 1:1000 dilution.
Secondary antibody: HRP Goat Anti-Rabbit IgG (H+L) at 1:10000 dilution.
Lysates/proteins: 25ug per lane.
Blocking buffer: 3% nonfat dry milk in TBST.
Detection: ECL West Pico Plus.
Exposure time: 30s.



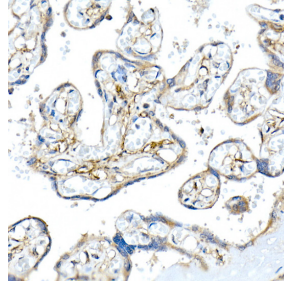
Western blot analysis of various lysates, using PDPN antibody at 1:1000 dilution.
Secondary antibody: HRP Goat Anti-Rabbit IgG (H+L) at 1:10000 dilution.
Lysates/proteins: 25ug per lane.
Blocking buffer: 3% nonfat dry milk in TBST.
Detection: ECL West Pico Plus.
Exposure time: 90s.



Immunohistochemistry of paraffinembedded human colon using Podoplanin Rabbit pAb at dilution of 1:20 (40x lens). Perform high pressure antigen retrieval with 10 mM citrate buffer pH 6.0 before commencing with IHC staining protocol.



Immunohistochemistry of paraffinembedded human lung using Podoplanin Rabbit pAb at dilution of 1:20 (40x lens). Perform high pressure antigen retrieval with 10 mM citrate buffer pH 6.0 before commencing with IHC staining protocol.



Immunohistochemistry of paraffinembedded human placenta using Podoplanin Rabbit pAb at dilution of 1:20 (40x lens). Perform high pressure antigen retrieval with 10 mM citrate buffer pH 6.0 before commencing with IHC staining protocol.