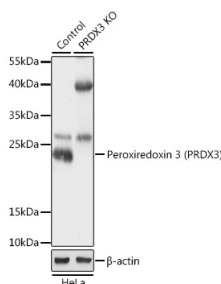


<b>Cat. No:</b>	AB-84440
<b>Conjugate:</b>	Unconjugated
<b>Size:</b>	100 ug
<b>Clone:</b>	POLY
<b>Concentration:</b>	1mg/ml
<b>Host:</b>	Rb
<b>Isotype:</b>	IgG
<b>Immunogen:</b>	Recombinant fusion protein containing a sequence corresponding to amino acids 1-256 of human Peroxiredoxin 3 (PRDX3)
<b>Reactivity:</b>	Hu, Ms, Rt
<b>Applications:</b>	WB 1:500 - 1:2000 IHC 1:50 - 1:200 IF 1:50 - 1:200 ICC 1:50 - 1:200
<b>Molecular Weight:</b>	25kDa
<b>Purification:</b>	Aff. Pur.
<b>Synonyms:</b>	PRDX3;AOP-1;AOP1;HBC189;MER5;PRO1748;SP-22;prx-III
<b>Background:</b>	<p>This gene encodes a mitochondrial protein with antioxidant function. The protein is similar to the C22 subunit of <i>Salmonella typhimurium</i> alkylhydroperoxide reductase, and it can rescue bacterial resistance to alkylhydroperoxide in <i>E. coli</i> that lack the C22 subunit. The human and mouse genes are highly conserved, and they map to the regions syntenic between mouse and human chromosomes. Sequence comparisons with recently cloned mammalian homologs suggest that these genes consist of a family that is responsible for the regulation of cellular proliferation, differentiation and antioxidant functions. This family member can protect cells from oxidative stress, and it can promote cell survival in prostate cancer. Alternative splicing of this gene results in multiple transcript variants. Related pseudogenes have been identified on chromosomes 1, 3, 13 and 22.</p>
<b>Form:</b>	Liquid
<b>Buffer:</b>	PBS with 0.01% thiomersal,50% glycerol,pH7.3.
<b>Storage:</b>	Store at -20°C. Avoid freeze / thaw cycles.



Western blot analysis of extracts from normal (control) and Peroxiredoxin 3 (PRDX3) knockout (KO) HeLa cells, using Peroxiredoxin 3 (PRDX3) antibody at

1:500 dilution.  
Secondary antibody: HRP Goat Anti-  
Rabbit IgG (H+L) at 1:10000 dilution.  
Lysates/proteins: 25ug per lane.  
Blocking buffer: 3% nonfat dry milk in  
TBST.  
Detection: ECL Basic Kit .  
Exposure time: 1min.

**For Research use only  
IMMUNOLOGICAL SCIENCES**