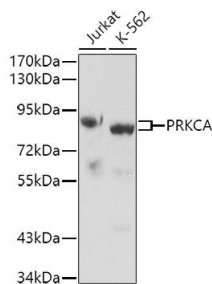
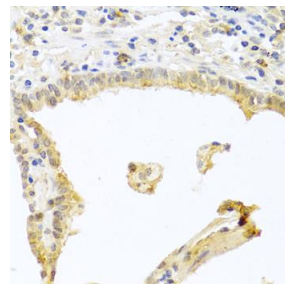


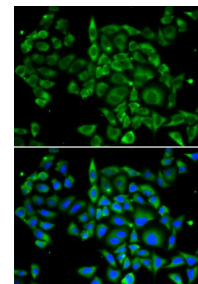
Cat. No:	AB-84289
Size:	100 ug
Clone:	POLY
Concentration:	1mg/ml
Host:	Rb
Isotype:	IgG
Immunogen:	A synthetic peptide corresponding to a sequence within amino acids 570 to the C-terminus of human PRKCA
Reactivity:	Hu, Ms
Applications:	Western Blot: 1:500 - 1:2000 Immunohistochemistry:1:50 - 1:200 Immunofluorescence: 1:50 - 1:200
Molecular Weight:	76kDa
Purification:	Aff. Pur.
Synonyms:	PRKCA;AAG6;PKC-alpha;PKCA;PRKACA;PKC alpha
Background:	Protein kinase C (PKC) is a family of serine- and threonine-specific protein kinases that can be activated by calcium and the second messenger diacylglycerol. PKC family members phosphorylate a wide variety of protein targets and are known to be involved in diverse cellular signaling pathways. PKC family members also serve as major receptors for phorbol esters, a class of tumor promoters. Each member of the PKC family has a specific expression profile and is believed to play a distinct role in cells. The protein encoded by this gene is one of the PKC family members. This kinase has been reported to play roles in many different cellular processes, such as cell adhesion, cell transformation, cell cycle checkpoint, and cell volume control. Knockout studies in mice suggest that this kinase may be a fundamental regulator of cardiac contractility and Ca(2+) handling in myocytes
Form:	Liquid
Buffer:	PBS with 0.02% sodium azide,50% glycerol,pH7.3.
Storage:	Store at -20°C. Avoid freeze / thaw cycles.



Western blot analysis of extracts of various cell lines, using PRKCA antibody
Secondary antibody: HRP Goat Anti-Rabbit IgG (H+L) at 1:10000 dilution.
Lysates/proteins: 25ug per lane.
Blocking buffer: 3% nonfat dry milk



Immunohistochemistry of paraffin embedded human lung cancer using PRKCA antibody at dilution of 1:100 (40x lens).



Immunofluorescence analysis of U2OS cells using PRKCA antibody.
Blue: DAPI for nuclear staining.

inTBST.

**For Research use only
IMMUNOLOGICAL SCIENCES**