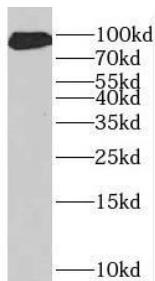


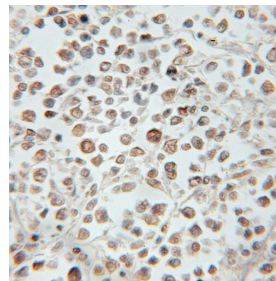
Cat. No:	AB-84319
Size:	100ug
Clone:	POLY
Concentration:	1mg/ml
Host:	Rb
Isotype:	IgG
Immunogen:	prosperohomeobox 1
Reactivity:	Hu, Ms, Rt
Applications:	Western Blot: 1:500-1:2000 Immunohistochemistry: 1:20-1:200 Immunofluorescence: 1:20-1:200
Molecular Weight:	90kDa
Purification:	Aff. Pur.
Synonyms:	prospero homeobox 1, Prospero homeobox protein 1, PROX 1, PROX1

Background: Transcription factor involved in developmental processes such as cell fate determination, gene transcriptional regulation and progenitor cell regulation in a number of organs. Plays a critical role in embryonic development and functions as a key regulatory protein in neurogenesis and the development of the heart, eye lens, liver, pancreas and the lymphatic system. Involved in the regulation of the circadian rhythm. Represses: transcription of the retinoid-related orphan receptor ROR γ , transcriptional activator activity of RORA and ROR γ and the expression of RORA/G-target genes including core clock components: ARNTL/BMAL1, NPAS2 and CRY1 and metabolic genes: AVPR1A and ELOVL3.

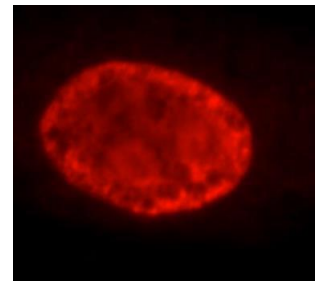
Form:	Liquid
Buffer:	PBS with 0.02% sodium azide and 50% glycerol pH 7.3
Storage:	T -20°C for 12 months (Avoid repeated freeze / thaw cycles.)



human liver tissue were subjected to SDS PAGE followed by western blot with (PROX1 antibody) at dilution of 1:500



Immunohistochemistry of paraffin-embedded human lymphoma using (PROX1 antibody) at dilution of 1:50



Immunofluorescent analysis of HepG2 cells using (PROX1 Antibody) at dilution of 1:100.

**For Research use only
IMMUNOLOGICAL SCIENCES**