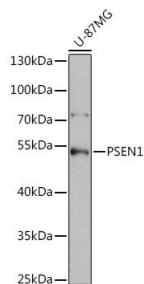
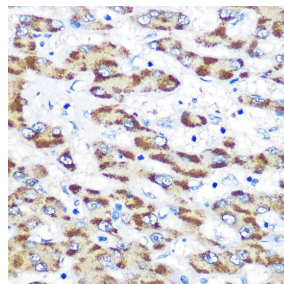


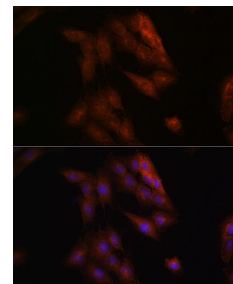
Cat. No:	AB-84324
Size:	100 ug
Clone:	POLY
Concentration:	1mg/ml
Host:	Rb
Isotype:	IgG
Immunogen:	Recombinant fusion protein containing a sequence corresponding to amino acids 1-160 of human PSEN1.
Reactivity:	Hu, Ms, Rt
Applications:	Western Blot: 1:500 - 1:2000 Immunohistochemistry: 1:50 - 1:200 Immunofluorescence: 1:50 - 1:200
Molecular Weight:	52kDa
Purification:	Aff. Pur.
Synonyms:	AD3;FAD;PS-1;PS1;S182;Presenilin 1;PSEN1
Background:	Alzheimer's disease (AD) patients with an inherited form of the disease carry mutations in the presenilin proteins (PSEN1; PSEN2) or in the amyloid precursor protein (APP). These disease-linked mutations result in increased production of the longer form of amyloid-beta (main component of amyloid deposits found in AD brains). Presenilins are postulated to regulate APP processing through their effects on gamma-secretase, an enzyme that cleaves APP. Also, it is thought that the presenilins are involved in the cleavage of the Notch receptor, such that they either directly regulate gamma-secretase activity or themselves are protease enzymes. Several alternatively spliced transcript variants encoding different isoforms have been identified for this gene, the full-length nature of only some have been determined.
Form:	Liquid
Buffer:	PBS with 0.02% sodium azide,50% glycerol,pH7.3.
Storage:	Store at -20°C. Avoid freeze / thaw cycles.



Western blot analysis of extracts of U-87MG cells, using PSEN1 antibody at 1:1000 dilution.
Secondary antibody: HRP Goat Anti-Rabbit IgG (H+L) at 1:10000 dilution.
Lysates/proteins: 25ug per lane.



Immunohistochemistry of paraffin embedded human liver using PSEN1 Rabbit pAb at dilution of 1:100 (40x lens).



Immunofluorescence analysis of C6 cells using PSEN1 Rabbit pAb at dilution of 1:100 (40x lens).
Blue: DAPI for nuclear staining.

Blocking buffer: 3% nonfat dry milk in
TBST.

Detection: ECL Enhanced Kit
Exposure time: 30s.

**For Research use only
IMMUNOLOGICAL SCIENCES**