

**Cat. No:** AB-11725  
**Conjugate:** Unconjugated  
**Size:** 100 ug  
**Clone:** POLY  
**Concentration:** 1mg/ml  
**Host:** Rabbit  
**Isotype:** IgG  
**Immunogen:** Synthesized peptide derived from PTEN at AA range: 251-300  
**Reactivity:** Hu, Ms, Rt

**Applications:** Western Blot: 1:500-2000  
 Immunofluorescence: 1:50-200  
 Immunohistochemistry(paraffin-embedded tissues): 100-300  
 ELISA 1:10000-20000

**Molecular Weight:** 50kD

**Purification:** Aff. Pur.

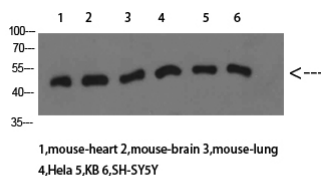
**Synonyms:** phosphatase and tensin homolog; phosphatase and tensin homolog pseudogene 1

**Background:** This gene was identified as a tumor suppressor that is mutated in a large number of cancers at high frequency. The protein encoded by this gene is a phosphatidylinositol-3,4,5-trisphosphate 3-phosphatase. It contains a tensin like domain as well as a catalytic domain similar to that of the dual specificity protein tyrosine phosphatases. Unlike most of the protein tyrosine phosphatases, this protein preferentially dephosphorylates phosphoinositide substrates. It negatively regulates intracellular levels of phosphatidylinositol-3,4,5-trisphosphate in cells and functions as a tumor suppressor by negatively regulating AKT/PKB signaling pathway. The use of a non-canonical (CUG) upstream initiation site produces a longer isoform that initiates translation with a leucine, and is thought to be preferentially associated with the mitochondrial inner membrane.

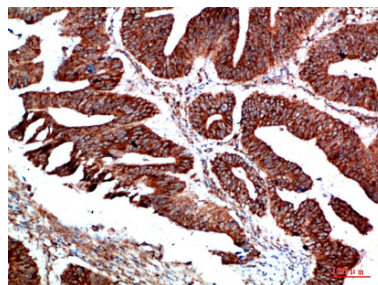
**Form:** Liquid

**Buffer:** Liquid in PBS containing 50% glycerol, 0.5% BSA and 0.02% sodium azide.

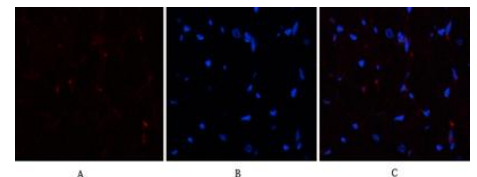
**Storage:** Store at -20°C. Avoid repeated freeze-thaw cycles.



Western Blot analysis of mouse-heart mouse-brain mouse-lung HeLa KB SH-SY5Y cells using PTEN Polyclonal



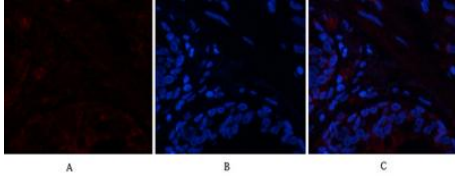
Immunohistochemical analysis of paraffin-embedded human colon cancer, antibody was diluted at 1:200



Immunofluorescence analysis of human-heart tissue.  
 1, PTEN Polyclonal Antibody (red) was diluted at 1:200 (4°C, overnight).  
 2, Cy3 labeled Secondary antibody was diluted at 1:300 (room temperature,

Antibody diluted at 1:1000. Secondary antibody was diluted at 1:20000

50min).  
3, Picture B: DAPI(blue) 10min. Picture A:Target. Pictur



Immunofluorescence analysis of human-lung tissue. 1,PTEN Polyclonal Antibody(red) was diluted at 1:200(4°C,overnight). 2, Cy3 labeled Secondary antibody was diluted at 1:300(room temperature, 50min).3, Picture B: DAPI(blue) 10min. Picture A:Target. Picture