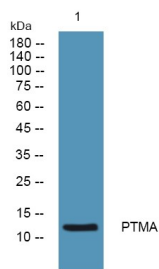


<b>Cat. No:</b>	AB-J2326
<b>Size:</b>	100ug
<b>Clone:</b>	POLY
<b>Concentration:</b>	1mg/ml
<b>Host:</b>	Rb
<b>Isotype:</b>	IgG
<b>Reactivity:</b>	Hu, Ms
<b>Applications:</b>	Western Blot: 1:500-2000 ELISA: 1:5000-20000
<b>Molecular Weight:</b>	12kDa
<b>Purification:</b>	PTMA antibody was affinity-purified from rabbit antiserum by affinity-chromatography using a epitope-specific immunogen.
<b>Background:</b>	Prothymosin alpha may mediate immune function by conferring resistance to certain opportunistic infections. PTM:Covalently linked to a small RNA of about 20 nucleotides.,similarity:Belongs to the pro/parathymosin family.
<b>Form:</b>	Liquid
<b>Buffer:</b>	Liquid in PBS containing 50% glycerol, and 0.02% sodium azide.
<b>Storage:</b>	Store at -20°C, and avoid repeat freeze-thaw cycles.



Western blot analysis of lysates from  
Jarkat cells, primary antibody was  
diluted  
at 1:1000, 4° over night

**For Research use only  
IMMUNOLOGICAL SCIENCES**