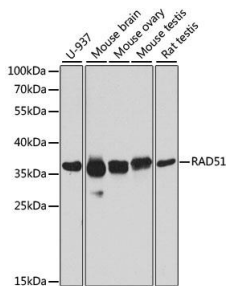


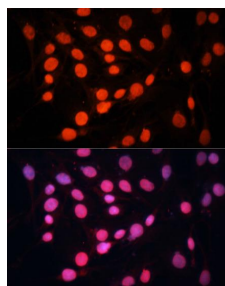
**Cat. No:** AB-83952  
**Size:** 100 ug  
**Clone:** POLY  
**Concentration:** 1mg/ml  
**Host:** Rb  
**Isotype:** IgG  
**Immunogen:** A synthetic peptide corresponding to a sequence within amino acids 50-150 of human RAD51  
**Reactivity:** Hu, Ms, Rt  
**Applications:** Western Blot: 1:500 -1:1000  
 Immunofluorescence: 1:50 -1:200  
**Molecular Weight:** 37kDa  
**Purification:** Aff. Pur.  
**Synonyms:** RAD51; BRCC5; FANCR; HRAD51; HsRad51; HsT16930 ; MRMV2; RAD51A; RECA; RAD51 recombinase

**Background:** The protein encoded by this gene is a member of the RAD51 protein family. RAD51 family members are highly similar to bacterial RecA and Saccharomyces cerevisiae Rad51, and are known to be involved in the homologous recombination and repair of DNA. This protein can interact with the ssDNA-binding protein RPA and RAD52, and it is thought to play roles in homologous pairing and strand transfer of DNA. This protein is also found to interact with BRCA1 and BRCA2, which may be important for the cellular response to DNA damage. BRCA2 is shown to regulate both the intracellular localization and DNA-binding ability of this protein. Loss of these controls following BRCA2 inactivation may be a key event leading to genomic instability and tumorigenesis. Multiple transcript variants encoding different isoforms have been found for this gene.

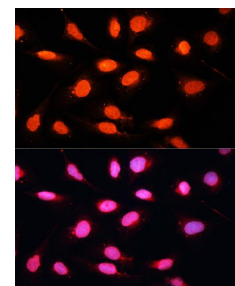
**Form:** Liquid  
**Buffer:** PBS with 0.02% sodium azide, 50% glycerol, pH7.3.  
**Storage:** Store at -20°C. Avoid freeze / thaw cycles.



Western blot analysis of extracts of various cell lines, using RAD51 antibody at 1:1000 dilution.  
 Secondary antibody: HRP Goat Anti-Rabbit IgG (H+L) at 1:10000 dilution.  
 Lysates/proteins: 25ug per lane.



Western blot analysis of extracts of various cell lines, using RAD51 antibody at 1:1000 dilution.  
 Secondary antibody: HRP Goat Anti-Rabbit IgG (H+L) at 1:10000 dilution.  
 Lysates/proteins: 25ug per lane.



Immunofluorescence analysis of U2OS cells using RAD51 antibody at dilution of 1:100.  
 Blue: DAPI for nuclear staining.

Blocking buffer: 3% nonfat dry milk in  
TBST.

Detection: ECL West Pico Plus  
Exposure time: 30s.

Blocking buffer: 3% nonfat dry milk in  
TBST.

Detection: ECL West Pico Plus.  
Exposure time: 30s.

**For Research use only  
IMMUNOLOGICAL SCIENCES**