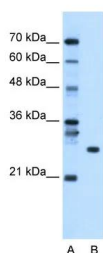
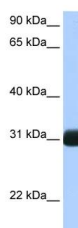


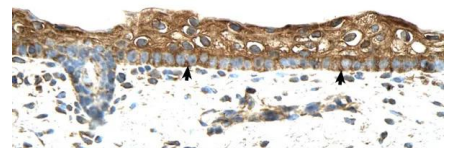
Cat. No:	AB-84774
Conjugate:	Unconjugated
Size:	100 ug
Clone:	POLY
Concentration:	1mg/ml
Host:	Rabbit
Isotype:	IgG
Immunogen:	The immunogen is a synthetic peptide directed towards the N terminal region of human RBPMS
Reactivity:	Human, Mouse
Applications:	Western Blot: 1:500-1:1000 Immunohisotchemistry: 1:100-1:200 Immunofluorescence: 1:200 Immunocytochemistry: 1:200
Molecular Weight:	24kDa
Purification:	Protein A purified
Background:	RBPMS is a member of the RRM family of RNA-binding proteins. The RRM domain is between 80-100 amino acids in length and family members contain one to four copies of the domain. The RRM domain consists of two short stretches of conserved sequence called RNP1 and RNP2, as well as a few highly conserved hydrophobic residues. RBPMS has a single, putative RRM domain in its N-terminus. This gene encodes a member of the RRM family of RNA-binding proteins. The RRM domain is between 80-100 amino acids in length and family members contain one to four copies of the domain. The RRM domain consists of two short stretches of conserved sequence called RNP1 and RNP2, as well as a few highly conserved hydrophobic residues. The protein encoded by this gene has a single, putative RRM domain in its N-terminus. Alternative splicing results in multiple transcript variants encoding different isoforms
Form:	Liquid
Buffer:	Liquid. Purified antibody supplied in 1x PBS buffer with 0.09% (w/v) sodium azide and 2% sucrose.
Storage:	For long term storage, store at -20C in small aliquots to prevent freeze-thaw cycles



WB Suggested Anti-RBPMS Antibody
Titration: 0.5ug/ml



WB Suggested Anti-RBPMS Antibody
Titration: 0.5 ug/ml

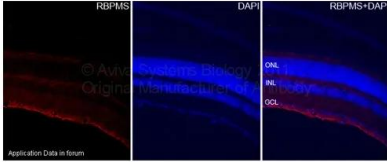


Rabbit Anti-RBPMS Antibody
Paraffin Embedded Tissue: Human Skin

Positive Control: Human Liver

Positive Control: Liver

Cellular Data: Squamous epithelial cells
Antibody Concentration: 4.0-8.0 ug/ml
Magnification: 400X



Mouse Retina Fixation of the tissues with 4% paraformaldehyde in 0.1M PO4, and performed typical procedures of immunocytochemistry. Blocking solution was 0.2% triton X-100 + 5% normal donkey serum in PBS.

RBPMS antibody was incubated in blocking solution with 1:200 dilution (4 degree, overnight).
Secondary antibody was Cy3-conjugated