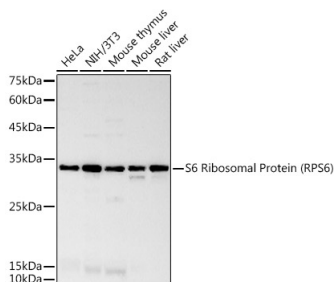


Cat. No:	MAB-94701
Conjugate:	Unconjugated
Size:	100 ug
Clone:	5G10
Concentration:	1mg/ml
Host:	Rb
Isotype:	IgG
Immunogen:	Recombinant fusion protein containing a sequence corresponding to amino acids 1-130 of human RPS6
Reactivity:	Hu, Ms, Rt
Applications:	WB 1:500 - 1:2000 IF 1:50 - 1:200 ICC 1:50 - 1:200
Molecular Weight:	32kDa
Purification:	Aff. Pur.
Synonyms:	RPS6;S6;S6 Ribosomal Protein

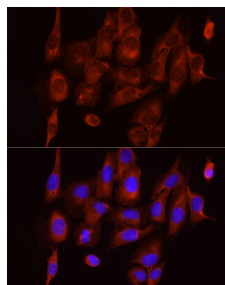
Background:

Ribosomes, the organelles that catalyze protein synthesis, consist of a small 40S subunit and a large 60S subunit. Together these subunits are composed of 4 RNA species and approximately 80 structurally distinct proteins. This gene encodes a cytoplasmic ribosomal protein that is a component of the 40S subunit. The protein belongs to the S6E family of ribosomal proteins. It is the major substrate of protein kinases in the ribosome, with subsets of five C-terminal erine residues phosphorylated by different protein kinases. Phosphorylation is induced by a wide range of stimuli, including growth factors, tumor-promoting agents, and mitogens. Dephosphorylation occurs at growth arrest. The protein may contribute to the control of cell growth and proliferation through the selective translation of particular lasses of mRNA. As is typical for genes encoding ribosomal proteins, there are multiple processed pseudogenes of this gene dispersed through the genome.

Form:	Liquid
Buffer:	PBS with 0.05% proclin300,0.05% BSA,50% glycerol,pH7.3.
Storage:	Store at -20°C. Avoid freeze / thaw cycles.



Western blot analysis of extracts of various cell lines, using RPS6 antibody at 1:1000 dilution. Secondary antibody:



Immunofluorescence analysis of U2OS cells using RPS6 Rabbit MAb at dilution of 1:100 (40x lens). Blue: DAPI for

HRP Goat Anti-Rabbit IgG (H+L) at
1:10000 dilution.
Lysates/proteins: 25ug per lane.
Blocking buffer: 3% nonfat dry milk in
TBST.
Detection: ECL Basic Kit.
Exposure time: 180s.

nuclear staining.