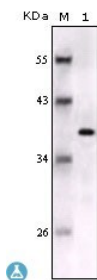
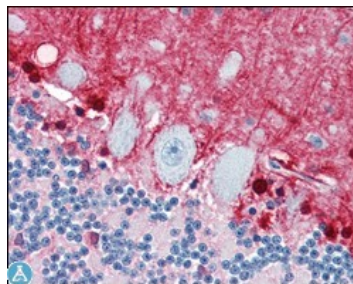


<b>Cat. No:</b>	MAB-94448
<b>Conjugate:</b>	Unconjugated
<b>Size:</b>	100 ug
<b>Clone:</b>	9A11B9
<b>Concentration:</b>	1mg/ml
<b>Host:</b>	Ms
<b>Isotype:</b>	IgG1
<b>Immunogen:</b>	Purified recombinant fragment of S-100 beta expressed in E. Coli.
<b>Reactivity:</b>	Hu
<b>Applications:</b>	Western Blot: 1:500-1:2000 Immunohistochemistry: 1:200-1:1000 ELISA: 1:10000
<b>Purification:</b>	Aff. Pur.
<b>Synonyms:</b>	Protein S100-B S-100 protein beta chain S-100 protein subunit beta S100 calcium-binding protein B
<b>Background:</b>	Weakly binds calcium but binds zinc very tightly-distinct binding sites with different affinities exist for both ions on each monomer. Physiological concentrations of potassium ion antagonize the binding of both divalent cations, especially affecting high-affinity calcium-binding sites. Binds to and initiates the activation of STK38 by releasing autoinhibitory intramolecular interactions within the kinase. Interaction with AGER after myocardial infarction may play a role in myocyte apoptosis by activating ERK1/2 and p53/TP53 signaling. Could assist ATAD3A cytoplasmic processing, preventing aggregation and favoring mitochondrial localization. May mediate calcium-dependent regulation on many physiological processes by interacting with other proteins, such as TPR-containing proteins, and modulating their activity.
<b>Form:</b>	Liquid
<b>Buffer:</b>	Ascitic fluid containing 0.03% sodium azide
<b>Storage:</b>	Store at -20°C, and avoid repeat freeze-thaw cycles.



Western Blot (WB) analysis using S-100 beta Monoclonal Antibody against full-length S-100 beta recombinant protein.



Immunohistochemistry (IHC) analysis of paraffin-embedded Human Brain, cerebellum with DAB staining using S-100 beta Monoclonal Antibody.

**For Research use only**  
**IMMUNOLOGICAL SCIENCES**