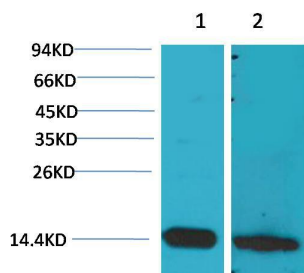


Cat. No:	AB-83888
Conjugate:	Unconjugated
Size:	100 ug
Clone:	POLY
Concentration:	1mg/ml
Host:	Rabbit
Isotype:	IgG
Immunogen:	Recombinant Protein
Reactivity:	Human, Mouse, Rat
Applications:	WesternBlot:1/1000-2000 Immunohistochemistry:1/50-100
Molecular Weight:	11kDa
Purification:	Aff. Pur.
Synonyms:	Protein S100-B antibody, S 100 calcium binding protein beta chain antibody, S100B antibody

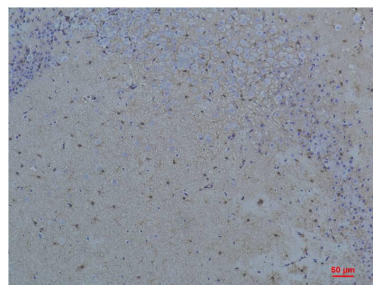
Background:

The protein encoded by this gene is a member of the S100 family of proteins containing 2 EF-hand calcium-binding motifs. S100 proteins are localized in the cytoplasm and/or nucleus of a wide range of cells, and involved in the regulation of a number of cellular processes such as cell cycle progression and differentiation. S100 genes include at least 13 members which are located as a cluster on chromosome 1q21; however, this gene is located at 21q22.3. This protein may function in Neurite extension, proliferation of melanoma cells, stimulation of Ca²⁺ fluxes, inhibition of PKC-mediated phosphorylation, astrocytosis and axonal proliferation, and inhibition of microtubule assembly. Chromosomal rearrangements and altered expression of this gene have been implicated in several neurological, neoplastic, and other types of diseases, including Alzheimer's disease, Down's syndrome, epilepsy, amyotrophic lateral sclerosis, melanoma, and type I diabetes.

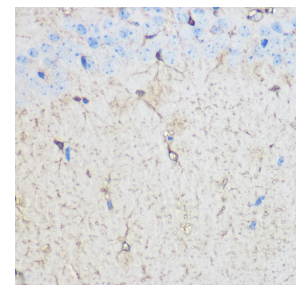
Form:	Liquid
Buffer:	PBS with 0.02% sodium azide and 50% glycerol pH 7.4.
Storage:	Store at -20°C. Avoid repeated freeze-thaw cycles.



Western blot analysis of 1) Mouse Brain Tissue,
2) Rat Brain Tissue with S100 β Rabbit



Immunohistochemical analysis of paraffin-embedded Rat Brain Tissue using S100 β Rabbit pAb diluted at



Immunohistochemistry analysis of paraffin-embedded Mouse brain using S100B Rabbit pAb at dilution of 1:100

pAb EA254 diluted at 1:2,000.

1:200.

(40x lens). Perform microwave antigen retrieval with 10 mM PBS buffer pH 7.2 before commencing with IHC staining protocol.

**For Research use only
IMMUNOLOGICAL SCIENCES**