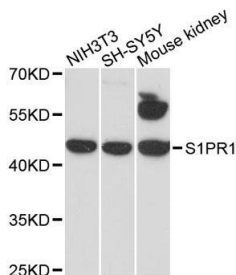
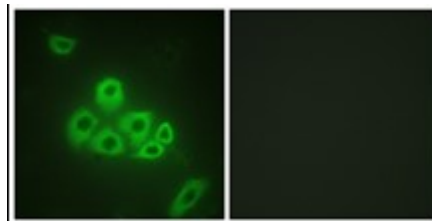


Cat. No:	AB-83739
Size:	100 ug
Clone:	POLY
Concentration:	1mg/ml
Host:	Rb
Isotype:	IgG
Immunogen:	Recombinant fusion protein containing a sequence of human S1PR1
Reactivity:	Hu, Ms
Applications:	Western Blot: 1:500- 1:1000 Immunofluorescence: 1:200-1:1,000
Molecular Weight:	43kDa
Purification:	Aff. Pur.
Synonyms:	CD363;CHEDG1;D1S3362;ECGF1;EDG-1;EDG1;S1P1
Background:	The protein encoded by this gene is structurally similar to G protein-coupled receptors and is highly expressed in endothelial cells. It binds the ligand sphingosine-1-phosphate with high affinity and high specificity, and suggested to be involved in the processes that regulate the differentiation of endothelial cells. Activation of this receptor induces cell-cell adhesion. Alternative splicing results in multiple transcript variants.
Form:	Liquid
Buffer:	PBS with 0.02% sodium azide, 50% glycerol, pH7.3.
Storage:	Store at -20°C. Avoid freeze / thaw cycles.



Western blot using S1PR1 on extracts of various cell lines at 1:1000 dilution.
Secondary antibody:
HRP Goat Anti-Rabbit IgG (H+L) at 1:10,000 dilution.
Lysates/proteins: 25ug per lane.
Blocking buffer: 3% nonfat dry milk in TBST.
Detection: ECL West Pico Kit.
Exposure time: 90s.



Immunofluorescence: 1:200

Immunofluorescence analysis of A549 cells, using S1P Receptor EDG1 Antibody. The picture on the right is blocked with the synthesized peptide

**For Research use only
IMMUNOLOGICAL SCIENCES**