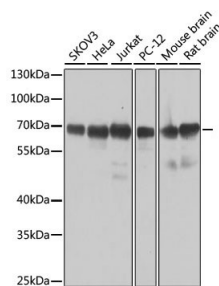


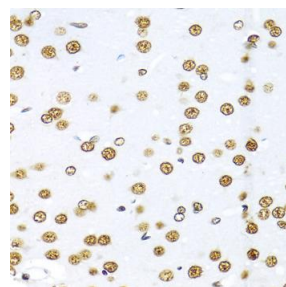
Cat. No:	AB-84326
Size:	100 ug
Clone:	POLY
Concentration:	1mg/ml
Host:	Rb
Isotype:	IgG
Immunogen:	A synthetic peptide corresponding to a sequence within amino acids 300 to the Cterminus of human SAM68.
Reactivity:	Hu, Ms, Rt
Applications:	Western Blot: 1:500 - 1:2000 Immunohistochemistry: 1:100 - 1:200 Immunofluorescence: 1:50 - 1:200
Molecular Weight:	68kDa
Purification:	Aff. Pur.
Synonyms:	KHDRBS1;Sam68;p62;p68
Background:	This gene encodes a member of the K homology domain-containing, RNA-binding, signal transduction-associated protein family. The encoded protein appears to have many functions and may be involved in a variety of cellular processes, including alternative splicing, cell cycle regulation, RNA 3'-end formation, tumorigenesis, and regulation of human immunodeficiency virus gene expression. Alternative splicing results in multiple transcript variants.
Form:	Liquid
Buffer:	PBS with 0.02% sodium azide,50% glycerol,pH7.3.
Storage:	Store at -20°C. Avoid freeze / thaw cycles.



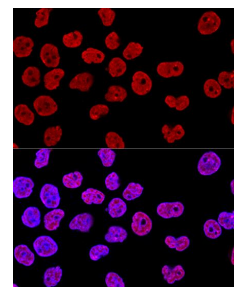
Western blot analysis of extracts of various cell lines, using SAM68 antibody) at 1:1000 dilution.

Secondary antibody: HRP Goat Anti-Rabbit IgG (H+L) at 1:10000 dilution.
Lysates/proteins: 25ug per lane.
Blocking buffer: 3% nonfat dry milk in TBST.

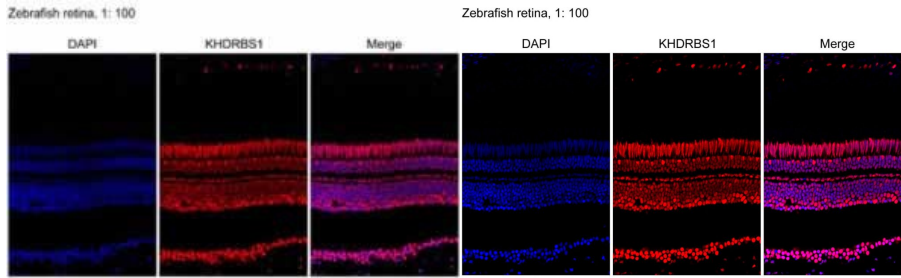
Detection: ECL west Pico Plus.
Exposure time: 10s.



Immunohistochemistry of paraffin embedded rat brain using SAM68 antibody at dilution of 1:100 (40x lens).



Confocal immunofluorescence analysis of HeLa cells using SAM68 Polyclonal Antibody at dilution of 1:400. Blue: DAPI for nuclear staining.



Review for SAM68 Rabbit pAb
Experiment Type:
Immunofluorescence(IF)
Sample: Zebrafish retina
Description: Immunofluorescence
analysis of Zebrafish retina, using
SAM68 Polyclonal Antibody.

Review for SAM68 Rabbit pAb
Experiment Type:
Immunofluorescence(IF)
Sample: Zebrafish retina
Description: Immunofluorescence
analysis of Zebrafish retina, using PCBP2
Polyclonal Antibody.

**For Research use only
IMMUNOLOGICAL SCIENCES**