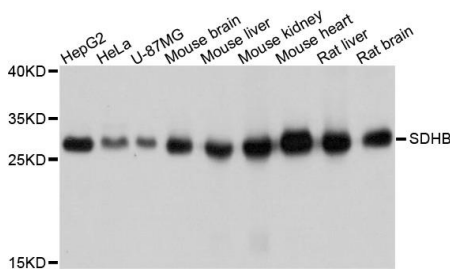


Cat. No:	AB-83825
Size:	100 ug
Clone:	POLY
Concentration:	1mg/ml
Host:	Rb
Isotype:	IgG
Immunogen:	Recombinant fusion protein containing a sequence corresponding to amino acids 29-280 of human SDHB.
Reactivity:	Hu, Ms, Rt
Applications:	Western Blot: 1:500-1:1000 Immunohistochemistry: 1:50
Molecular Weight:	32kDa
Purification:	Aff. Pur
Background:	Complex II of the respiratory chain, which is specifically involved in the oxidation of succinate, carries electrons from FADH to CoQ. The complex is composed of four nuclear-encoded subunits and is localized in the mitochondrial inner membrane. The iron-sulfur subunit is highly conserved and contains three cysteine-rich clusters which may comprise the iron-sulfur centers of the enzyme. Sporadic and familial mutations in this gene result in paragangliomas and pheochromocytoma, and support a link between mitochondrial dysfunction and tumorigenesis.
Form:	Liquid
Buffer:	PBS with 0.02% sodium azide, 50% glycerol, pH 7.3.
Storage:	Store at -20°C. Avoid freeze / thaw cycles.



Western blot analysis of extracts of various cell lines, using SDHB antibody at 1:1000 dilution.

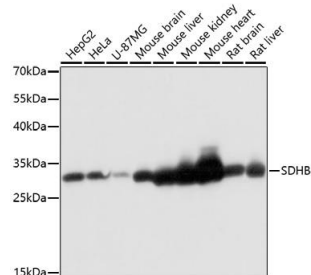
Secondary antibody: HRP Goat Anti-Rabbit IgG (H+L) at 1:10000 dilution.

Lysates/proteins: 25ug per lane.

Blocking buffer: 3% nonfat dry milk in TBST.

Detection: ECL Basic Kit.

Exposure time: 1s.



Western blot analysis of extracts of various cells, using SDHB antibody at 1:1000 dilution ratio through one-step method.

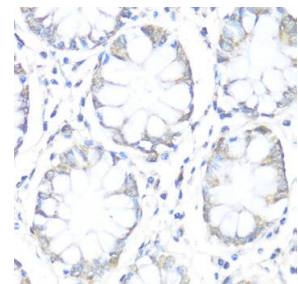
Secondary antibody: HRP Goat Anti-Rabbit IgG (H+L) at 1:4000 dilution.

Lysates/proteins: 25ug per lane.

Blocking buffer: 3% nonfat dry milk in TBST.

Detection: ECL Basic Kit.

Exposure time: 10s.



Immunohistochemistry of paraffin Embedded human colon using SDHB antibody at dilution of 1:100 (40x lens).

**For Research use only
IMMUNOLOGICAL SCIENCES**