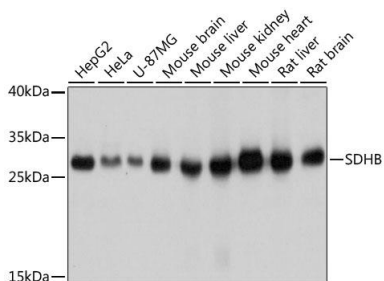
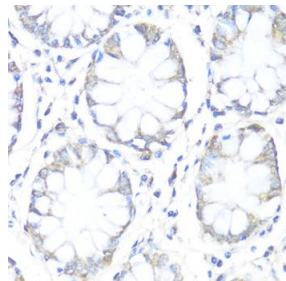


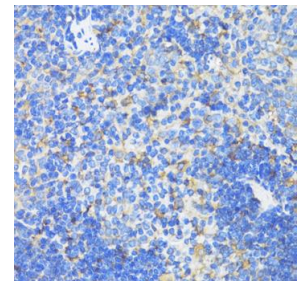
<b>Cat. No:</b>	MAB-94613
<b>Size:</b>	100 ug
<b>Clone:</b>	21A11AE7
<b>Concentration:</b>	1mg/ml
<b>Host:</b>	Rb
<b>Isotype:</b>	IgG
<b>Immunogen:</b>	Recombinant fusion protein containing a sequence corresponding to amino acids 29-280 of human SDHB.
<b>Reactivity:</b>	Hu, Ms, Rt
<b>Applications:</b>	Western Blot: 1:500 - 1:2000 Immunohistochemistry: 1:50-1:100 Immunofluorescence: 1:50-1:200
<b>Molecular Weight:</b>	32kDa
<b>Purification:</b>	Aff. Pur
<b>Synonyms:</b>	CWS2; IP; PGL4; SDH; SDH1; SDH2; SDHIP
<b>Background:</b>	Complex II of the respiratory chain, which is specifically involved in the oxidation of succinate, carries electrons from FADH to CoQ. The complex is composed of four nuclear-encoded subunits and is localized in the mitochondrial inner membrane. The iron-sulfur subunit is highly conserved and contains three cysteine-rich clusters which may comprise the iron-sulfur centers of the enzyme. Sporadic and familial mutations in this gene result in paragangliomas and pheochromocytoma, and support a link between mitochondrial dysfunction and tumorigenesis.
<b>Form:</b>	Liquid
<b>Buffer:</b>	PBS with 0.02% sodium azide, 50% glycerol, pH 7.3.
<b>Storage:</b>	Store at -20°C. Avoid freeze / thaw cycles.



Western blot analysis of extracts of various cell lines, using SDHB antibody at 1:1000 dilution.  
Secondary antibody: HRP Goat Anti-Rabbit IgG (H+L) at 1:10000 dilution.  
Lysates/proteins: 25ug per lane.  
Blocking buffer: 3% nonfat dry milk in TBST.  
Detection: ECL West Pico Plus. Exposure

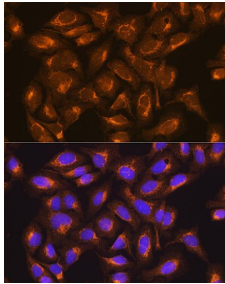


Immunohistochemistry of paraffin embedded human colon using SDHB antibody at dilution of 1:100 (40x lens).

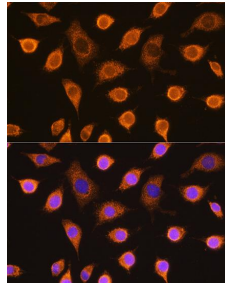


Immunohistochemistry of paraffin embedded mouse spleen using SDHB antibody at dilution of 1:100 (40x lens).

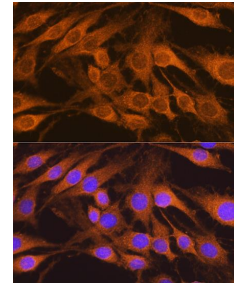
time: 1s.



Immunofluorescence analysis of U2OS cells using SDHB Rabbit mAb at dilution of 1:100. Blue: DAPI for nuclear staining.



Immunofluorescence analysis of L929 cells using SDHB Rabbit mAb at dilution of 1:100. Blue: DAPI for nuclear staining.



Immunofluorescence analysis of C6 cells using SDHB Rabbit mAb at dilution of 1:100. Blue: DAPI for nuclear staining.

**For Research use only  
IMMUNOLOGICAL SCIENCES**