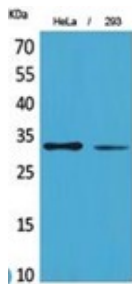
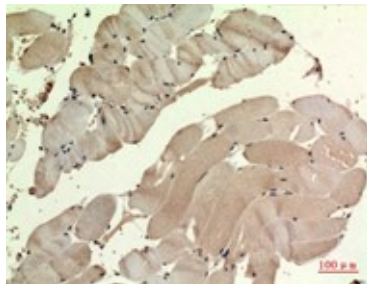


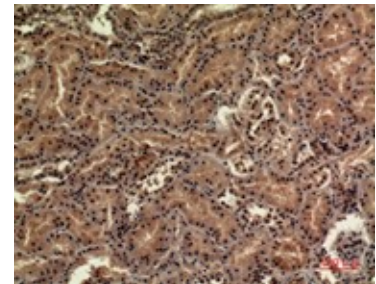
Cat. No:	MAB-94451
Size:	100 ug
Clone:	POLY
Concentration:	1mg/ml
Host:	Rb
Isotype:	IgG
Immunogen:	Synthesized peptide derived from human SDHB
Reactivity:	Hu, Ms, Rt
Applications:	Western Blot: 1:500-1:2000 Immunohistochemistry (paraffin-embedded tissues): 1:100-1:300 ELISA: 1:20000
Molecular Weight:	31kDa
Purification:	The antibody was affinity-purified from rabbit antiserum by affinity chromatography using epitope-specific immunogen.
Background:	SDHB Monoclonal Antibody detects endogenous levels of SDHB protein.
Form:	Liquid
Buffer:	Liquid in PBS containing 50% glycerol, 0.5% BSA and 0.02% sodium azide.
Storage:	Store at -20°C, and avoid repeat freeze-thaw cycles.



Western Blot (WB) analysis of HeLa, 293 cells using SDHB polyclonal antibody.



Immunohistochemistry (IHC) analysis of paraffin-embedded Human Muscle, antibody was diluted at 1:100.



immunohistochemistry (IHC) analysis of paraffin-embedded Human Kidney, antibody was diluted at 1:100.

**For Research use only
IMMUNOLOGICAL SCIENCES**