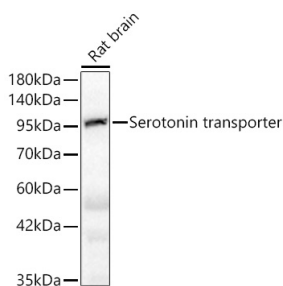
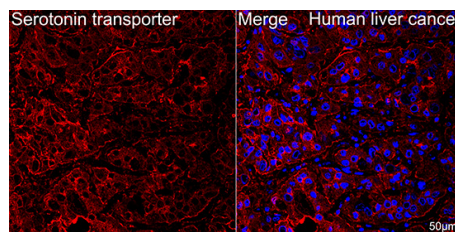


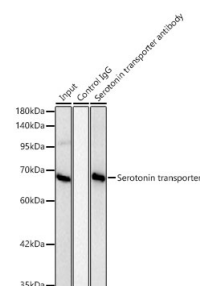
Cat. No:	AB-84419
Conjugate:	Unconjugated
Size:	100 ug
Clone:	POLY
Concentration:	1mg/ml
Host:	Rabbit
Isotype:	IgG
Immunogen:	A synthetic peptide corresponding to a sequence within amino acids 1-100 of human Serotonin transporter.
Reactivity:	Human,Mouse,Rat
Applications:	Western Blot: 1:500 - 1:1000 Immunofluorescence: 1:50 - 1:200 Immunocytochemistry: 1:50 - 1:200 Immunoprecipitation: 0.5µg-4µg antibody for 400µg-600µg extracts of whole cells
Molecular Weight:	70kDa
Purification:	Aff. Pur.
Synonyms:	HTT; 5HTT; OCD1; SERT; 5-HTT; SERT1; hSERT; 5-HTTLPR; Serotonin transporter
Background:	This gene encodes an integral membrane protein that transports the neurotransmitter serotonin from synaptic spaces into presynaptic neurons. The encoded protein terminates the action of serotonin and recycles it in a sodium-dependent manner. This protein is a target of psychomotor stimulants, such as amphetamines and cocaine, and is a member of the sodium:neurotransmitter symporter family. A repeat length polymorphism in the promoter of this gene has been shown to affect the rate of serotonin uptake. There have been conflicting results in the literature about the possible effect, if any, that this polymorphism may play in behavior and depression.
Form:	Liquid
Buffer:	PBS with 0.02% sodium azide,0.05% BSA,50% glycerol,pH7.3.
Storage:	Store at -20°C. Avoid freeze / thaw cycles.



Western blot analysis of rat brain using Serotonin transporter Rabbit pAb at 1:1000 dilution.
Secondary antibody: HRP Goat Anti-Rabbit IgG (H+L) at 1:10000 dilution.



Confocal imaging of paraffin-embedded Human liver cancer tissue using Serotonin transporter Rabbit pAb dilution 1:200) followed by a further incubation with Cy3 Goat Anti-Rabbit IgG (H+L) dilution 1:500) (Red). DAPI was used for nuclear



Immunoprecipitation of Serotonin transporter from 500 µg extracts of HT-29 cells was performed using 2 µg of Serotonin transporter Rabbit pAb. Rabbit IgG isotype control was used to

Lysates/proteins: 25µg per lane.
Blocking buffer: 3% nonfat dry milk in
TBST.
Detection: ECL West Pico Plus.
Exposure time: 5s.

staining (Blue). Objective: 40x. Perform
high pressure antigen retrieval with
0.01 M citrate buffer (pH 6.0) prior to IF
staining.

precipitate the Control IgG sample. IP
samples were eluted with 1X Laemmli
Buffer. The Input lane represents 10% of
the total input. Western blot analysis of
immunoprecipitates was conducted
using Serotonin transporter Rabbit pAb
at a dilution of 1:1000.