



Cat. No: AB-83611

Size: 100 ug

Clone: POLY

Concentration: 1mg/ml

Host: Rb

Isotype: IgG

Immunogen: The immunogen is a synthetic peptide directed towards the C-terminal region of Human SGPL1

Reactivity: Hu, Ms, Rt

Applications: Western Blot: 1:500 – 1:2000
Application details contain suggested dilutions. End user should optimize the final working concentrations.

Molecular Weight: 63524

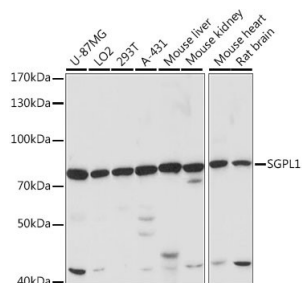
Purification: Aff. Pur.

Background: SGPL1 (Sphingosine-1-Phosphate Lyase 1) is a Protein Coding gene. Diseases associated with SGPL1 include Congenital Adrenal Insufficiency. Among its related pathways are Sphingolipid metabolism (which is part of Lipid metabolism) and Sphingolipid signaling pathway. Cleaves phosphorylated sphingoid bases (PSBs), such as sphingosine-1-phosphate, into fatty aldehydes and phosphoethanolamine. Elevates stress-induced ceramide production and apoptosis.

Form: Liquid

Buffer: Purified antibody supplied in 1x PBS buffer with 0.02% sodium azide, 50% glycerol, pH 7.3.

Storage: At -20°C for one year. It can also be aliquoted and stored frozen at -20°C for a longer time. Avoid repeated freezing and thawing.



Western blot analysis of extracts of various cell lines using
Secondary Antibody: Goat anti- Rabbit
Anti- IgG (H+L) at 1:10,000
Affinity purified polyclonal SGLP1
antibody at 1:1,000
Lysate/protein: 25ug/lane
Blocking buffer: 3% not fat dry milk in
TBST.
The blot was developed using
chemiluminescence method (ECL West

Pico)
Exposure: 120''

**For Research use only
IMMUNOLOGICAL SCIENCES**