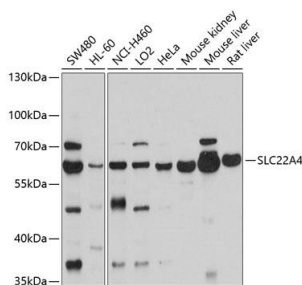


|                          |   |
|--------------------------|---|
| <b>Cat. No:</b>          | AB-84171  |
| <b>Size:</b>             | 100 ug  |
| <b>Clone:</b>            | POLY  |
| <b>Concentration:</b>    | 1mg/ml  |
| <b>Host:</b>             | Rb  |
| <b>Isotype:</b>          | IgG   |
| <b>Immunogen:</b>        | Recombinant fusion protein containing a sequence corresponding to amino acids 42-141 of human SLC22A4   |
| <b>Reactivity:</b>       | Hu, Ms, Rt  |
| <b>Applications:</b>     | Western Blot: 1:500 - 1:2000  |
| <b>Molecular Weight:</b> | 62kDa   |
| <b>Purification:</b>     | Aff. Pur.   |
| <b>Synonyms:</b>         | SLC22A4; DFNB60; OCTN1; solute carrier family 22 member 4   |
| <b>Background:</b>       | Polyspecific organic cation transporters in the liver, kidney, intestine, and other organs are critical for elimination of many endogenous small organic cations as well as a wide array of drugs and environmental toxins. The encoded protein is an organic cation transporter and plasma integral membrane protein containing eleven putative transmembrane domains as well as a nucleotide-binding site motif. Transport by this protein is at least partially ATP-dependent. |
| <b>Form:</b>             | Liquid  |
| <b>Buffer:</b>           | PBS with 0.02% sodium azide,50% glycerol,pH7.3.   |
| <b>Storage:</b>          | Store at -20°C. Avoid freeze / thaw cycles.   |



Western blot analysis of extracts of various cell lines, using SLC22A4 antibody at 1:1000 dilution.

Secondary antibody: HRP Goat Anti-Rabbit IgG (H+L) at 1:10000 dilution.

Lysates/proteins: 25ug per lane.

Blocking buffer: 3% nonfat dry milk in TBST.

Detection: ECL Basic Kit.

Exposure time: 10s.

**For Research use only  
IMMUNOLOGICAL SCIENCES**