

**Cat. No:** AB-84812  
**Conjugate:** Unconjugated  
**Size:** 100 ug  
**Clone:** POLY  
**Concentration:** 1mg/ml  
**Host:** Rabbit  
**Isotype:** IgG

**Immunogen:** A synthetic peptide corresponding to a sequence within amino acids 201-300 of human SLC7A11/xCT.

**Reactivity:** Human, Mouse, Rat

**Applications:** Western Blot: 1:500 - 1:1000  
ELISA Recommended starting concentration is 1 µg/mL.  
Please optimize the concentration based on your specific assay requirements.

**Molecular Weight:** 42kDa

**Purification:** Affinity purification

**Synonyms:** xCT; CCB1; SLC7A11/xCT

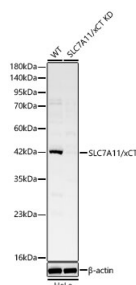
**Background:**

This gene encodes a member of a heteromeric, sodium-independent, anionic amino acid transport system that is highly specific for cysteine and glutamate. In this system, designated Xc(-), the anionic form of cysteine is transported in exchange for glutamate. This protein has been identified as the predominant mediator of Kaposi sarcoma-associated herpesvirus fusion and entry permissiveness into cells. Also, increased expression of this gene in primary gliomas (compared to normal brain tissue) was associated with increased glutamate secretion via the XCT channels, resulting in neuronal cell death.

**Form:** Liquid

**Buffer:** PBS with 0.05% proclin300, 50% glycerol, pH 7.3.

**Storage:** Store at -20°C. Avoid freeze / thaw cycles.



Western blot analysis of lysates from wild type (WT) and SLC7A11/xCT knockdown (KD) HeLa cells using [KD Validated] SLC7A11/xCT Rabbit pAb at 1:1000 dilution.

Secondary antibody: HRP-conjugated Goat anti-Rabbit IgG (H+L) at 1:10000 dilution. Lysates/proteins: 25 µg per

lane.  
Blocking buffer: 3% nonfat dry milk in  
TBST.  
Detection: ECL West Pico Plus.  
Exposure time: 60s.

**For Research use only  
IMMUNOLOGICAL SCIENCES**