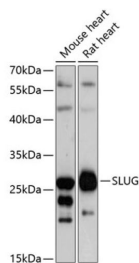


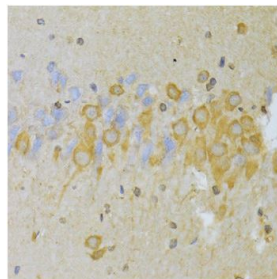
<b>Cat. No:</b>	AB-84208
<b>Size:</b>	100 ug
<b>Clone:</b>	POLY
<b>Concentration:</b>	1mg/ml
<b>Host:</b>	Rb
<b>Isotype:</b>	IgG
<b>Immunogen:</b>	Recombinant fusion protein containing a sequence corresponding to amino acids 89-268 of human SLUG
<b>Reactivity:</b>	Hu, Ms, Rt
<b>Applications:</b>	Western Blot : 1:500-1:2,000 Immunofluorescence/Immunocytochemistry: 1:50-1: 200 Immunohistochemistry (paraffin, formalin, frozen Tissues): 1:50-1:200
<b>Molecular Weight:</b>	29kDa
<b>Purification:</b>	Aff. Pur.
<b>Synonyms:</b>	SNAI2; SLUG; SLUGH; SLUGH1; SNAIL2; WS2D
<b>Background:</b>	This gene encodes a member of the Snail family of C2H2-type zinc finger transcription factors. The encoded protein acts as a transcriptional repressor that binds to E-box motifs and is also likely to repress E-cadherin transcription in breast carcinoma. This protein is involved in epithelial-mesenchymal transitions and has antiapoptotic activity. Mutations in this gene may be associated with sporadic cases of neural tube defects.
<b>Form:</b>	Liquid
<b>Buffer:</b>	PBS with 0,02% sodium azide, 50% glycerol pH7.3
<b>Storage:</b>	Storage for short term at 4°C recommended, for longer term at -20°C, minimize freeze/thaw cycles



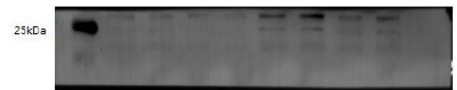
Western blot analysis of extracts of various cell lines, using SLUG antibody at 1:1000 dilution.

Secondary antibody: HRP Goat Anti-Rabbit IgG (H+L) at 1:10000 dilution.  
Lysates/proteins: 25ug per lane.  
Blocking buffer: 3% nonfat dry milk in TBST.

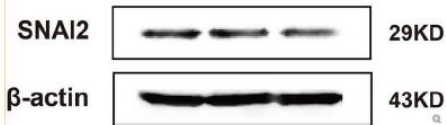
Detection: ECL West Pico Kit  
Exposure time: 60s..



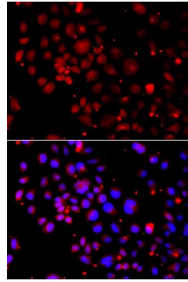
Immunohistochemistry of paraffin-embedded rat brain using SLUG Antibody at dilution of 1:100



Application: Western blot (WB)  
Sample mouse cells  
Loading Amount 15 ug  
Dilution 1:1000  
Incubation time over night  
Temperature : 4 °C  
Exposure: 30s  
Observed Band: 25 kDa



Application: Western blot Sample MDA-  
MB-231  
Loading Amount 15 ug  
Dilution 1:2000  
Incubation time over night  
Temperature 4 °C  
Exposure 30s  
Observed Band 29 kDa



Immunofluorescence analysis of A549  
cells using SLUG antibody. Blue: DAPI for  
nuclear staining.

## References

Product:SLUG Polyclonal Antibody Journal:Oncology Application:WB IF:2.262

Species:human PMID:29566977

Title:

CO suppresses prostate cancer cell growth by directly targeting LKB1/AMPK/mTOR pathway in vitro and in vivo

Product:SLUG Polyclonal Antibody -Journal:Theranostics Application:WB, IF IF:8.688

Species:Human PMID 30026878

Title:

AP-2 $\beta$  inhibits hepatocellular carcinoma invasion and metastasis through Slug and Snail to suppress epithelial-mesenchymal transition

Product:SLUG Polyclonal Antibody Journal:Toxicology and applied pharmacology

Application:WB, IF, Co-IP, IF:

Species:Human - PMID:31381904

Title:

The involvement of lipid raft pathway in suppression of TGF $\beta$ -mediated metastasis by tolfenamic acid in hepatocellular carcinoma cells.

Product:SLUG Polyclonal Antibody -Journal:Cellular signalling

Application:WB, IF, IP IF:3.48 Species:Human

PMID:30953699 -

Title:

Effects of MCRS1 on proliferation, migration, invasion, and epithelial mesenchymal transition of gastric cancer cells by interacting with Pkmyt1 protein kinase.