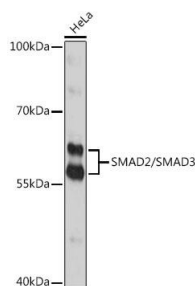
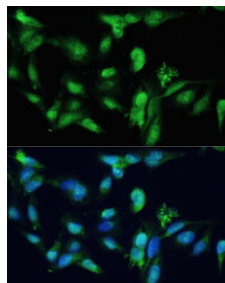


<b>Cat. No:</b>	AB-90212
<b>Size:</b>	100 ug
<b>Clone:</b>	POLY
<b>Concentration:</b>	1mg/ml
<b>Host:</b>	Rb
<b>Isotype:</b>	IgG
<b>Immunogen:</b>	Recombinant fusion protein containing a sequence corresponding to amino acids 1-230 of human SMAD3.
<b>Reactivity:</b>	Hu, Ms, Rt
<b>Applications:</b>	Western Blot: 1:500 - 1:1000 Immunohistochemistry: 1:50 - 1:100 Immunofluorescence: 1:50 - 1:100
<b>Molecular Weight:</b>	56-60kDa
<b>Purification:</b>	Aff. Pur.
<b>Synonyms:</b>	HSPC193;HsT17436;JV15-2;LDS1C;LDS3;MADH3
<b>Background:</b>	The protein encoded by this gene belongs to the SMAD, a family of proteins similar to the gene products of the Drosophila gene 'mothers against decapentaplegic' (Mad) and the C. elegans gene Sma. SMAD proteins are signal transducers and transcriptional modulators that mediate multiple signaling pathways. This protein functions as a transcriptional modulator activated by transforming growth factorbeta and is thought to play a role in the regulation of carcinogenesis.
<b>Form:</b>	Liquid
<b>Buffer:</b>	PBS with 0,02% sodium azide, 50% glycerol pH7.3
<b>Storage:</b>	Store at -20°C. Avoid freeze / thaw cycles.



Western blot analysis of extracts of HeLa cells, using SMAD2/SMAD3 antibody at 1:1000 dilution.  
Secondary antibody: HRP Goat Anti-Rabbit IgG (H+L) at 1:10000 dilution.  
Lysates/proteins: 25ug per lane.  
Blocking buffer: 3% nonfat dry milk in TBST.  
Detection: ECL West Pico Plus.



Immunofluorescence analysis of U2OS cells using SMAD2/SMAD3 antibody at dilution of 1:100. Blue: DAPI for nuclear staining.

Exposure time: 5s.

**For Research use only  
IMMUNOLOGICAL SCIENCES**