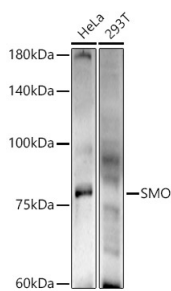


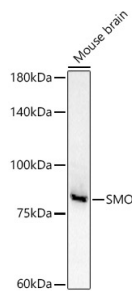
Cat. No:	AB-84784
Conjugate:	Unconjugated
Size:	100 ug
Clone:	POLY
Concentration:	1mg/ml
Host:	Rabbit
Isotype:	IgG
Immunogen:	Recombinant fusion protein containing a sequence corresponding to amino acids 28-233 of human SMO.
Reactivity:	Human, Mouse
Applications:	Western Blot: 1:100 - 1:500
Molecular Weight:	86kDa
Purification:	Affinity purification
Synonyms:	Gx; CRJS; PHLS; SMOH; FZD11; SMO
Background:	The protein encoded by this gene is a G protein-coupled receptor that interacts with the patched protein, a receptor for hedgehog proteins. The encoded protein transduces signals to other proteins after activation by a hedgehog protein/patched protein complex.
Form:	Liquid
Buffer:	Store at -20°C. Avoid freeze / thaw cycles.
Storage:	PBS with 0.05% proclin300,50% glycerol,pH7.3.



Western blot analysis of extracts of various cell lines, using SMO antibody at 1:500 dilution.

Secondary antibody: HRP Goat Anti-Rabbit IgG (H+L) at 1:10000 dilution.
Lysates/proteins: 25µg per lane.
Blocking buffer: 3% nonfat dry milk in TBST.

Detection: ECL West Pico Plus.
Exposure time: 120s.



Western blot analysis of extracts of Mouse brain, using SMO antibody at 1:500 dilution.

Secondary antibody: HRP Goat Anti-Rabbit IgG (H+L) at 1:10000 dilution.
Lysates/proteins: 25µg per lane.
Blocking buffer: 3% nonfat dry milk in TBST.

Detection: ECL West Pico plus.
Exposure time: 180s.

**For Research use only
IMMUNOLOGICAL SCIENCES**