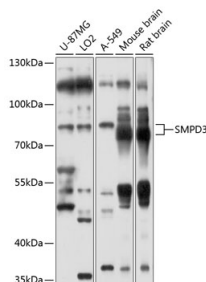


Cat. No:	AB-84780
Conjugate:	Unconjugated
Size:	100 ug
Clone:	POLY
Concentration:	1mg/ml
Host:	Rabbit
Isotype:	IgG
Immunogen:	Recombinant fusion protein containing a sequence corresponding to amino acids 416-655 of human SMPD3 (
Reactivity:	Human, Mouse, Rat
Molecular Weight:	80kDa
Purification:	Affinity purification
Synonyms:	NSMASE2; SMPD3

Background: Predicted to enable phosphatidic acid binding activity; phosphatidylserine binding activity; and sphingomyelin phosphodiesterase activity. Predicted to be involved in positive regulation of exosomal secretion and sphingomyelin metabolic process. Predicted to act upstream of or within several processes, including animal organ development; enzyme linked receptor protein signaling pathway; and sphingolipid metabolic process. Predicted to be located in Golgi apparatus and plasma membrane. Predicted to be active in cytoplasm. Biomarker of pulmonary emphysema.

Form:	Liquid
Buffer:	PBS with 0.05% proclin300,50% glycerol,pH7.3.
Storage:	Store at -20°C. Avoid freeze / thaw cycles.



Western blot analysis of extracts of various cell lines, using SMPD3 antibody at 1:1000 dilution.

Secondary antibody: HRP Goat Anti-Rabbit IgG (H+L) at 1:10000 dilution.

Lysates/proteins: 25µg per lane.

Blocking buffer: 3% nonfat dry milk in TBST.

Detection: ECI West Pico Plus.

Exposure time: 10s.

**For Research use only
IMMUNOLOGICAL SCIENCES**