



Cat. No: AB-11433

Conjugate: Unconjugated

Size: 100 ug

Clone: POLY

Concentration: 1mg/ml

Host: Rabbit

Isotype: IgG

Immunogen: A synthetic peptide corresponding to a sequence within amino acids 250-350 of human SSTR3.

Reactivity: Human, Mouse, Rat

Applications: Western Blot: 1:500 - 1:2000

Molecular Weight: 46kDa

Purification: Aff. Pur.

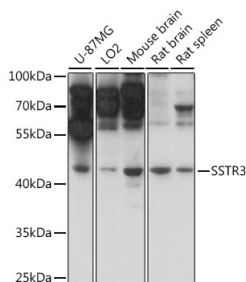
Synonyms: SS3R; SST3; SS3-R; SS-3-R; SSR-28; SSTR3

Background: This gene encodes a member of the somatostatin receptor protein family. Somatostatins are peptide hormones that regulate diverse cellular functions such as neurotransmission, cell proliferation, and endocrine signaling as well as inhibiting the release of many hormones and other secretory proteins. Somatostatin has two active forms of 14 and 28 amino acids. The biological effects of somatostatins are mediated by a family of G-protein coupled somatostatin receptors that are expressed in a tissuespecific manner. Somatostatin receptors form homodimers and heterodimers with other members of the superfamily as well as with other G-protein coupled receptors and receptor tyrosine kinases. This protein is functionally coupled to adenylyl cyclase. Alternate splicing results in multiple transcript variants.

Form: Liquid

Buffer: PBS with 0.01% thimerosal,50% glycerol,pH7.3.

Storage: Store at -20°C. Avoid freeze / thaw cycles.



Western blot analysis of various lysates using SSTR3 Rabbit pAb at 1:1000 dilution. Secondary antibody: HRP Goat Anti-Rabbit IgG (H+L) at 1:10000 dilution. Lysates/proteins:25µg per lane. Blocking buffer: 3% nonfat dry milk in TBST. Detection: ECL West Pico Plus.

Exposure time: 1s.

**For Research use only
IMMUNOLOGICAL SCIENCES**