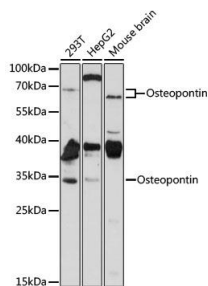


Cat. No:	AB-84206
Size:	100ug
Clone:	POLY
Concentration:	1mg/ml
Host:	Rb
Isotype:	IgG
Immunogen:	Recombinant fusion protein containing a sequence corresponding to amino acids 17-314 of human SPP1.
Reactivity:	Hu, Ms
Applications:	Western Blot: 1:500 - 1:2000
Molecular Weight:	35kDa/6kDa
Purification:	Aff. Pur.
Synonyms:	BNSP;BSPI;ETA-1;OPN;Osteopontin;SPP1
Background:	<p>The protein encoded by this gene is involved in the attachment of osteoclasts to the mineralized bone matrix. The encoded protein is secreted and binds hydroxyapatite with high affinity. The osteoclast vitronectin receptor is found in the cell membrane and may be involved in the binding to this protein. This protein is also a cytokine that upregulates expression of interferon-gamma and interleukin-12. Several transcript variants encoding different isoforms have been found for this gene.</p>
Form:	Liquid
Buffer:	PBS with 0.02% sodium azide,50% glycerol,pH7.3.
Storage:	Store at -20°C. Avoid freeze / thaw cycles



Western blot analysis of extracts of various cell lines, using Osteopontin antibody at 1:500 dilution.

Secondary antibody: HRP Goat Anti-Rabbit IgG (H+L) at 1:10000 dilution.

Lysates/proteins: 25ug per lane.

Blocking buffer: 3% nonfat dry milk in TBST.

Detection: ECL West Pico Plus.

Exposure time: 3min.

**For Research use only
IMMUNOLOGICAL SCIENCES**