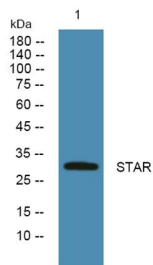


<b>Cat. No:</b>	AB-J14390
<b>Conjugate:</b>	Unconjugated
<b>Size:</b>	100 ug
<b>Clone:</b>	POLY
<b>Concentration:</b>	1mg/ml
<b>Host:</b>	Rabbit
<b>Isotype:</b>	IgG
<b>Immunogen:</b>	Synthesized peptide derived from part region of human protein.
<b>Reactivity:</b>	Human;Rat;Mouse
<b>Applications:</b>	Western Blot: 1:500-2000 ELISA 1:5000-20000
<b>Molecular Weight:</b>	31kD
<b>Purification:</b>	The antibody was affinity-purified from rabbit antiserum by affinity-chromatography using epitope-specific immunogen.
<b>Synonyms:</b>	Store at -20°C. Avoid repeated freeze-thaw cycles.
<b>Background:</b>	The protein encoded by this gene plays a key role in the acute regulation of steroid hormone synthesis by enhancing the conversion of cholesterol into pregnenolone. This protein permits the cleavage of cholesterol into pregnenolone by mediating the transport of cholesterol from the outer mitochondrial membrane to the inner mitochondrial membrane. Mutations in this gene are a cause of congenital lipid adrenal hyperplasia (CLAH), also called lipid CAH. A pseudogene of this gene is located on chromosome 13.
<b>Form:</b>	Liquid
<b>Buffer:</b>	Liquid in PBS containing 50% glycerol, 0.5% BSA and 0.02% sodium azide.
<b>Storage:</b>	Store at -20°C. Avoid repeated freeze-thaw cycles.



Western blot analysis of lysates from SH-SY5Y cells, primary antibody was diluted at 1:1000, 4°over night

**For Research use only  
IMMUNOLOGICAL SCIENCES**