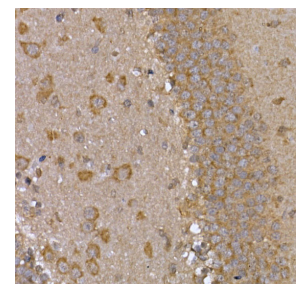
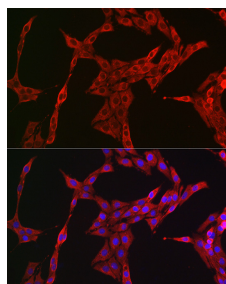
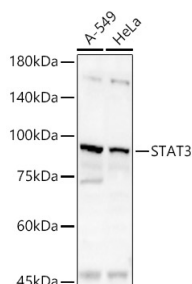


<b>Cat. No:</b>	AB-83813
<b>Conjugate:</b>	Unconjugated
<b>Size:</b>	100 ug
<b>Clone:</b>	POLY
<b>Concentration:</b>	1mg/ml
<b>Host:</b>	Rb
<b>Isotype:</b>	IgG
<b>Immunogen:</b>	The antiserum was produced against synthesized peptide derived from human STAT3. AA range:672-721
<b>Reactivity:</b>	Hu, Ms,Rt  Western Blot: 1/500 1/2000 Immunofluorescence: 1:50-200 Immunohistochemistry: 1/100 - 1/300 ELISA:1/5000
<b>Applications:</b>	
<b>Molecular Weight:</b>	88kD
<b>Purification:</b>	The antibody was affinity-purified from rabbit antiserum by affinity-chromatography using epitope-specific immunogen.
<b>Synonyms:</b>	STAT3; APRF; Signal transducer and activator of transcription 3; Acute-phase response factor  The protein encoded by this gene is a member of the STAT protein family. In response to cytokines and growth factors, STAT family members are phosphorylated by the receptor associated kinases, and then form homo- or heterodimers that translocate to the cell nucleus where they act as transcription activators. This protein is activated through phosphorylation in response to various cytokines and growth factors including IFNs, EGF, IL5, IL6, HGF, LIF and BMP2. This protein mediates the expression of a variety of genes in response to cell stimuli, and thus plays a key role in many cellular processes such as cell growth and apoptosis. The small GTPase Rac1 has been shown to bind and regulate the activity of this protein. PIAS3 protein is a specific inhibitor of this protein. Mutations in this gene are associated with infantile-onset multisystem autoimmune disease and hyper
<b>Background:</b>	
<b>Form:</b>	Liquid
<b>Buffer:</b>	Liquid in PBS containing 50% glycerol, 0.5% BSA and 0.02% sodium azide.
<b>Storage:</b>	Store at -20°C. Avoid repeated freeze-thaw cycles.



Western blot analysis of various lysates,  
using STAT3 Rabbit pAb at 1:2000  
dilution.

Secondary antibody: HRP Goat Anti-  
Rabbit IgG (H+L) at 1:10000 dilution.

Lysates/proteins: 25µg per lane.

Blocking buffer: 3% nonfat dry milk in  
TBST.

Detection: ECL West Pico Plus.

Exposure time: 60s.

Immunofluorescence analysis of PC-12  
cells using STAT3 Rabbit pAb at dilution  
of 1:200 (40x lens).

Blue: DAPI for nuclear staining.

Immunohistochemistry analysis of  
paraffin-embedded mouse brain using  
STAT3 Rabbit pAb at dilution of  
1:200 (40x lens). Perform high pressure  
antigen retrieval with 10 mM citrate  
buffer pH 6.0 before commencing with  
IHC  
staining protocol.