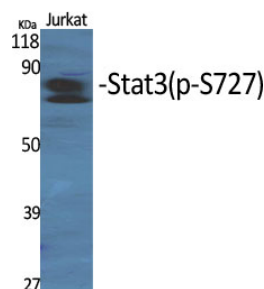
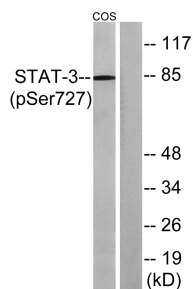


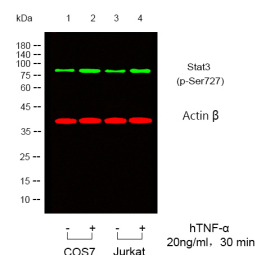
Cat. No:	ABP-5041
Conjugate:	Unconjugated
Size:	100 ug
Clone:	POLY
Concentration:	1mg/ml
Host:	Rabbit
Isotype:	IgG
Immunogen:	The antiserum was produced against synthesized peptide derived from human STAT3 around the phosphorylation site of Ser727. AA range:694-743
Reactivity:	Human;Mouse;Rat;Monkey Western Blot: 1/500 1/2000.Immunofluorescence: 1:50-200
Applications:	Immunohistochemistry: 1/100 – 1/300 Immunoprecipitation: 2-5 ug/mg lysate ELISA: 1/10000.
Molecular Weight:	85kD
Purification:	The antibody was affinity-purified from rabbit antiserum by affinity-chromatography using epitope-specific immunogen.
Synonyms:	STAT3; APRF; Signal transducer and activator of transcription 3; Acute-phase response factor The protein encoded by this gene is a member of the STAT protein family. In response to cytokines and growth factors, STAT family members are phosphorylated by the receptor associated kinases, and then form homo- or heterodimers that translocate to the cell nucleus where they act as transcription activators. This protein is activated through phosphorylation in response to various
Background:	cytokines and growth factors including IFNs, EGF, IL5, IL6, HGF, LIF and BMP2. This protein mediates the expression of a variety of genes in response to cell stimuli, and thus plays a key role in many cellular processes such as cell growth and apoptosis. The small GTPase Rac1 has been shown to bind and regulate the activity of this protein. PIAS3 protein is a specific inhibitor of this protein. Mutations in this gene are associated with infantile-onset multisystem autoimmune disease and hyper
Form:	Liquid
Buffer:	Liquid in PBS containing 50% glycerol, 0.5% BSA and 0.02% sodium azide.
Storage:	Store at -20°C. Avoid repeated freeze-thaw cycles.



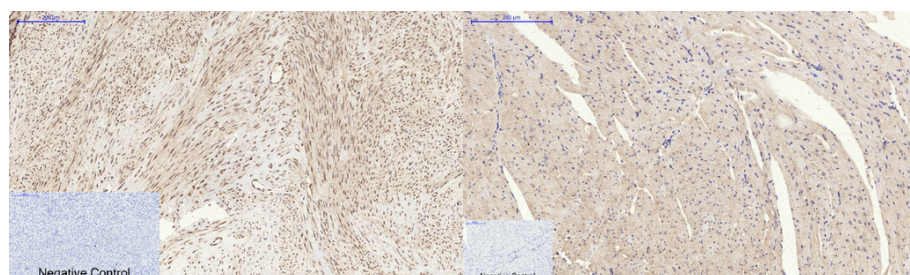
Western Blot analysis of various cells using Phospho-Stat3 (S727) Polyclonal Antibody diluted at 1:2000



Western blot analysis of lysates from COS7 cells, using STAT3 (Phospho-Ser727) Antibody. The lane on the right is blocked with the phospho peptide.

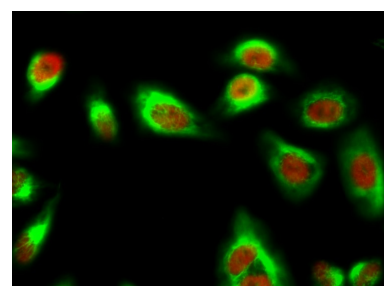


Western blot analysis of lysates from COS7 cells, using STAT3 (Phospho-Ser727) Antibody. The lane on the right is blocked with the phospho peptide.



Immunohistochemical analysis of paraffin-embedded Human-uterus tissue. 1, Stat3 (phospho Ser727) Polyclonal Antibody was diluted at 1:200 (4°C, overnight). 2, Sodium citrate pH 6.0 was used for antibody retrieval (>98°C, 20 min). 3, Secondary antibody was diluted at 1:200 (room temperature, 30 min). Negative control was used by secondary antibody only.

Immunohistochemical analysis of paraffin-embedded Mouse-heart tissue. 1, Stat3 (phospho Ser727) Polyclonal Antibody was diluted at 1:200 (4°C, overnight). 2, Sodium citrate pH 6.0 was used for antibody retrieval (>98°C, 20 min). 3, Secondary antibody was diluted at 1:200 (room temperature, 30 min). Negative control was used by secondary antibody only.



Immunofluorescence analysis of HeLa cell. 1, Stat3 (phospho Ser727) Polyclonal Antibody (red) was diluted at 1:200 (4°C overnight). Caspase 9 Monoclonal Antibody (3-20) (green) was diluted at 1:200 (4°C overnight). 2, Goat Anti Rabbit Alexa Fluor 594 was diluted at 1:1000 (room temperature, 50 min). Goat Anti Mouse Alexa Fluor 488 8 was diluted at 1:1000 (room temperature, 50 min).

**For Research use only
IMMUNOLOGICAL SCIENCES**