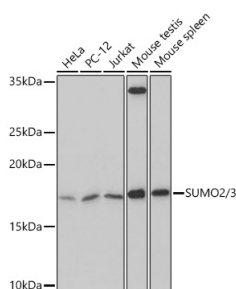
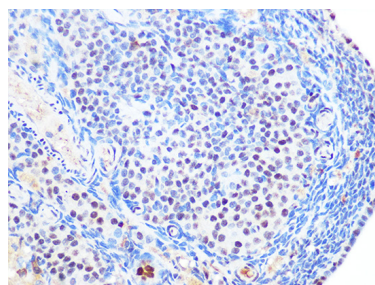


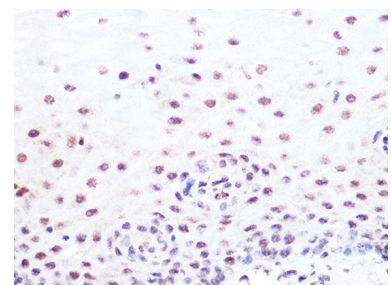
Cat. No:	AB-84757
Conjugate:	Unconjugated
Size:	100 ug
Clone:	POLY
Concentration:	1mg/ml
Host:	Rabbit
Isotype:	IgG
Immunogen:	A synthetic peptide corresponding to a sequence within amino acids 1-95 of human SUMO2/3.
Reactivity:	Human, Mouse, Rat
Applications:	Western Blot: 1:100 - 1:500 Immunohistochemistry (paraffin embedded tissues): 1:50 - 1:200 Immunofluorescence: 1:50 - 1:200 Immunocytochemistry: 1:50 - 1:200
Molecular Weight:	17kDa
Purification:	Affinity purification
Synonyms:	HSMT3; SMT3B; SUMO3; Smt3A; SMT3H2
Background:	This gene encodes a protein that is a member of the SUMO (small ubiquitin-like modifier) protein family. It functions in a manner similar to ubiquitin in that it is bound to target proteins as part of a post-translational modification system. However, unlike ubiquitin which targets proteins for degradation, this protein is involved in a variety of cellular processes, such as nuclear transport, transcriptional regulation, apoptosis, and protein stability. It is not active until the last two amino acids of the carboxy-terminus have been cleaved off. Numerous pseudogenes have been reported for this gene. Alternate transcriptional splice variants, encoding different isoforms, have been characterized.
Form:	Liquid
Buffer:	PBS with 0.02% sodium azide, 0.05% BSA, 50% glycerol, pH 7.3.
Storage:	Store at -20°C. Avoid freeze / thaw cycles.



Western blot analysis of extracts of various cell lines, using SUMO2/3 Rabbit pAb at 1:500 dilution.
Secondary antibody: HRP Goat Anti-Rabbit IgG (H+L) at 1:10000 dilution.



Immunohistochemistry analysis of paraffin-embedded rat ovary using SUMO2/3 Rabbit pAb at dilution of 1:100 (40x lens). Perform microwave antigen retrieval with 10 mM Tris/EDTA buffer pH 9.0 before commencing with IHC



Immunohistochemistry analysis of paraffin-embedded human esophageal using SUMO2/3 Rabbit pAb at dilution of 1:100 (40x lens). Perform microwave antigen retrieval with 10 mM Tris/EDTA buffer pH 9.0 before commencing with

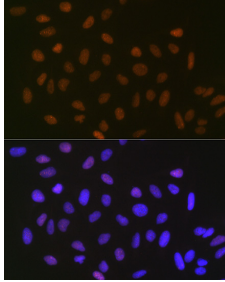
Lysates/proteins: 25µg per lane.
Blocking buffer: 3% nonfat dry milk in
TBST.

Detection: ECL West Pico Plus.

Exposure time: 3min.

staining protocol.

IHC staining protocol.



Immunofluorescence analysis of U-2 OS
cells using SUMO2/3 Rabbit pAb at
dilution of 1:100 (40x lens).
Blue: DAPI for nuclear staining.

References:

Product: SUMO2/3 Rabbit pAb

Journal:eLife

Application:WB

IF:8.71

Species:Mus musculus

PMID:35942699

Title:Isoform-specific mutation in Dystonin-b gene causes late-onset protein aggregate myopathy and cardiomyopathy – PMC

**For Research use only
IMMUNOLOGICAL SCIENCES**