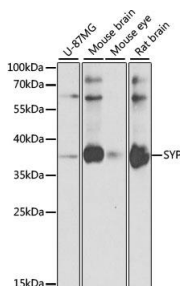


Cat. No:	AB-82642
Conjugate:	Unconjugated
Size:	100 ug
Clone:	POLY
Concentration:	1mg/ml
Host:	Rb
Isotype:	IgG
Immunogen:	A synthetic peptide corresponding to a sequence within amino acids 150-250 of human Synaptophysin.
Reactivity:	Hu,Ms,Rt
Applications:	Western Blot: 1:500 - 1:2000 Immunohistochemistry: 1:50 - 1:100 Immunofluorescence: 1:50 - 1:200
Molecular Weight:	38kDa
Purification:	Aff. Pur.
Synonyms:	SYP; MRX96; MRXSYP;
Background:	This gene encodes an integral membrane protein of small synaptic vesicles in brain and endocrine cells. The protein also binds cholesterol and is thought to direct targeting of vesicle-associated membrane protein 2 (synaptobrevin) to intracellular compartments. Mutations in this gene are associated with X-linked mental retardation (XLMR).
Form:	Liquid
Buffer:	PBS with 0.02% sodium azide,50% glycerol,pH7.3.
Storage:	Store at -20°C. Avoid freeze / thaw cycles.



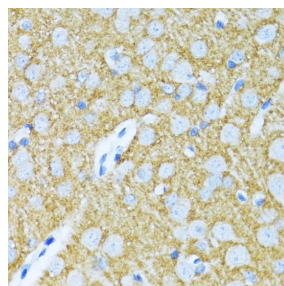
Western blot analysis of extracts of various cell lines, using Synaptophysin antibody at 1:1000 dilution.

Secondary antibody: HRP Goat Anti-Rabbit IgG (H+L) at 1:10000 dilution.

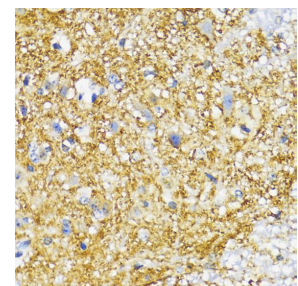
Lysates/proteins: 25ug per lane.

Blocking buffer: 3% nonfat dry milk in TBST.

Detection: ECL West Pico Plus



Immunohistochemistry of paraffin embedded rat brain using Synaptophysin antibody at dilution of 1:100 (40x lens).



Immunohistochemistry of paraffin embedded mouse spinal cord using Synaptophysin antibody at dilution of 1:100 (40x lens).

Exposure time: 20s.

**For Research use only
IMMUNOLOGICAL SCIENCES**