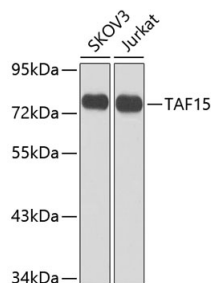
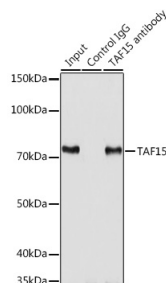


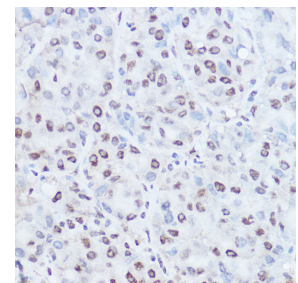
<b>Cat. No:</b>	AB-84381
<b>Conjugate:</b>	Unconjugated
<b>Size:</b>	100 ug
<b>Clone:</b>	POLY
<b>Concentration:</b>	1mg/ml
<b>Host:</b>	Rb
<b>Isotype:</b>	IgG
<b>Immunogen:</b>	Recombinant fusion protein containing a sequence corresponding to amino acids 1-280of human TAF15
<b>Reactivity:</b>	Hu
<b>Applications:</b>	WB: 1:500 - 1:2000 IHC: 1:50 - 1:100 IF: 1:50 - 1:200 IP: 1:50 - 1:200
<b>Molecular Weight:</b>	80kDa
<b>Purification:</b>	Aff. Pur.
<b>Synonyms:</b>	TAF15;Npl3;RBP56;TAF2N;TAFII68
<b>Background:</b>	This gene encodes a member of the TET family of RNA-binding proteins. The encoded protein plays a role in RNA polymerase II gene transcription as a component of a distinct subset of multi-subunit transcription initiation factor TFIID complexes. Translocations involving this gene play a role in acute leukemia and extraskeletal myxoid chondrosarcoma, and mutations in this gene may play a role in amyotrophic lateral sclerosis. Alternatively spliced transcript variants encoding multiple isoforms have been observed for this gene.
<b>Form:</b>	Liquid
<b>Buffer:</b>	Buffer: PBS with 0.02% sodium azide,50% glycerol,pH7.3.
<b>Storage:</b>	Store at -20°C. Avoid freeze / thaw cycles.



Western blot analysis of extracts of various cell lines, using TAF15 antibody at 1:1000 dilution.  
Secondary antibody: HRP Goat Anti-Rabbit IgG (H+L) at 1:10000 dilution.  
Lysates/proteins: 25ug per lane.  
Blocking buffer: 3% nonfat dry milk in



Immunoprecipitation analysis of 200ug extracts of SKOV3 cells using 3ug TAF15 antibody.  
Western blot was performed from the immunoprecipitate using TAF15 antibody at a dilution of 1:1000.



Immunohistochemistry of paraffinembedded human liver cancer using TAF15 Rabbit pAb at dilution of 1:150 (40x lens).

TBST.  
Detection: ECL West Pico Plus.  
Exposure time: 5s.

**For Research use only  
IMMUNOLOGICAL SCIENCES**